

Evaluarea Națională 2024

Rezultate după contestații 9 iulie 2024

La Evaluarea Națională din **160.467** candidați înscriși s-au prezentat la toate probele **152.903** prezența fiind de **95,3%**.

Din cei **152.903** de candidați prezenți, un număr de:

- **113.911** candidați (**74,5%**) au obținut medii mai mari sau egale cu 5
- **38.992** candidați (**25,5%**) au obținut medii mai mici ca 5
- **74** candidați au obținut media **10**

La proba de limbă și literatură română:

- **119.350** candidați (**77,8%**) au note peste 5
- **416** candidați au obținut nota 10

La proba de matematică:

- **105.214** candidați (**68,8%**) au note peste nota 5
- **1.133** candidați au obținut nota 10

La proba de limbă și literatură maternă:

- **8.321** candidați (**90,5%**) au note peste 5
- **68** candidați au obținut nota 10

Istoric evaluare națională 2013-2024								
An	Înscriși	Prezenți	Procent prezență	Medii cel puțin 5	% cel puțin 5	Medii sub 5	% sub 5	Media 10
2013	166,712	162,331	97.4%	123,194	75.9%	39,137	24.1%	856
2014	165,188	160,011	96.9%	113,721	71.1%	46,290	28.9%	225
2015	163,408	158,576	97.0%	125,840	79.4%	32,736	20.6%	456
2016	153,673	148,648	96.7%	111,598	75.1%	37,050	24.9%	253
2017	144,929	140,712	97.1%	108,294	77.0%	32,418	23.0%	497
2018	150,603	142,847	94.9%	105,109	73.6%	37,738	26.4%	345
2019	155,020	146,105	94.9%	107,000	73.2%	39,105	26.8%	459
2020	172,543	160,663	93.1%	122,357	76.2%	38,306	23.8%	892
2021	131,180	123,185	93.9%	94,660	76.8%	28,525	23.2%	132
2022	155,561	148,496	95.5%	122,301	82.4%	26,195	17.6%	237
2023	161,652	154,115	95.3%	117,798	76.4%	36,317	23.6%	466
2024	160,467	152,903	95.3%	113,911	74.5%	38,992	25.5%	74

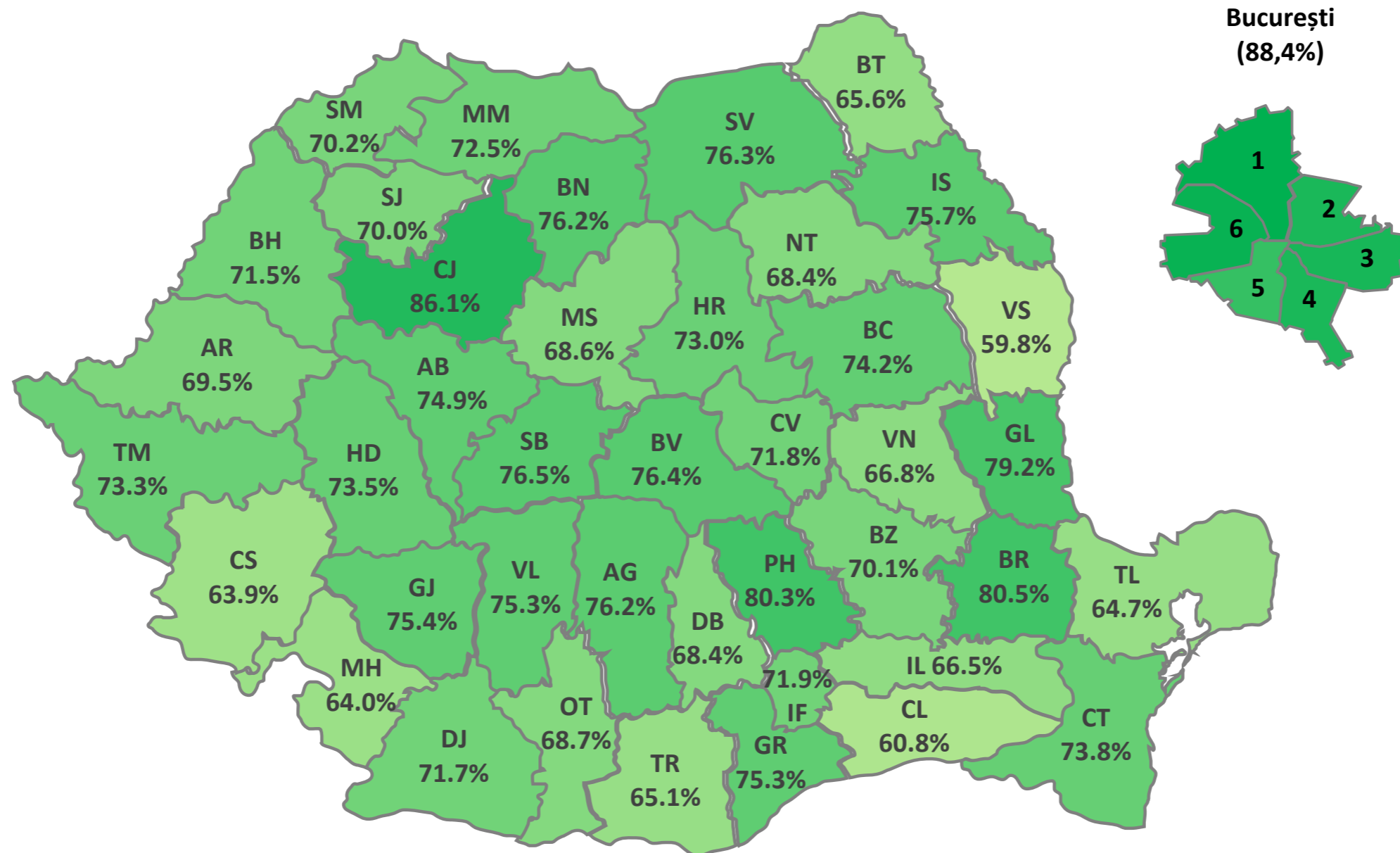
Istoric evaluare națională 2013-2024 (limba română)								
An	Înscriși	Prezenți	Procent prezență	Note cel puțin 5	% cel puțin 5	Note sub 5	% sub 5	Nota 10
2013	166,712	162,331	97.4%	134,025	82.6%	28,306	17.4%	1,550
2014	165,188	160,011	96.9%	117,469	73.4%	42,542	26.6%	599
2015	163,408	159,010	97.3%	135,947	85.5%	23,063	14.5%	1,137
2016	153,673	149,122	97.0%	122,557	82.2%	26,565	17.8%	1,244
2017	144,929	141,101	97.4%	121,315	86.0%	19,786	14.0%	1,745
2018	150,603	143,255	95.1%	119,163	83.2%	24,092	16.8%	2,172
2019	155,020	146,547	94.5%	118,276	80.7%	28,271	19.3%	2,011
2020	172,543	161,194	93.4%	135,365	84.0%	25,829	16.0%	4,700
2021	131,180	123,606	94.2%	103,836	84.0%	19,770	16.0%	482
2022	155,561	148,888	95.7%	128,159	86.1%	20,729	13.9%	824
2023	161,652	154,594	95.6%	120,268	77.8%	34,326	22.2%	1,500
2024	160,467	153,397	95.6%	119,350	77.8%	34,047	22.2%	416

Istoric evaluare națională 2013-2024 (matematică)								
An	Înscriși	Prezenți	Procent prezență	Note cel puțin 5	% cel puțin 5	Note sub 5	% sub 5	Nota 10
2013	166,712	162,331	97.4%	116,297	71.6%	46,034	28.4%	11,092
2014	165,188	160,011	96.9%	116,724	72.9%	43,287	27.1%	4,360
2015	163,408	158,572	97.0%	116,641	73.6%	41,931	26.4%	5,873
2016	153,673	148,645	96.7%	100,123	67.4%	48,522	32.6%	2,604
2017	144,929	140,723	97.1%	92,886	66.0%	47,837	34.0%	4,450
2018	150,603	142,871	94.9%	87,767	61.4%	55,104	38.6%	1,953
2019	155,020	146,175	94.3%	91,775	62.8%	54,400	37.2%	2,600
2020	172,543	160,742	93.2%	112,796	70.2%	47,946	29.8%	3,335
2021	131,180	123,295	94.0%	83,145	67.4%	40,150	32.6%	1,505
2022	155,561	148,596	95.5%	115,223	77.5%	33,373	22.5%	3,038
2023	161,652	154,239	95.4%	116,369	75.4%	37,870	24.6%	3,188
2024	160,467	153,013	95.4%	105,214	68.8%	47,799	31.2%	1,133

Procentul mediilor mai mari decât 5

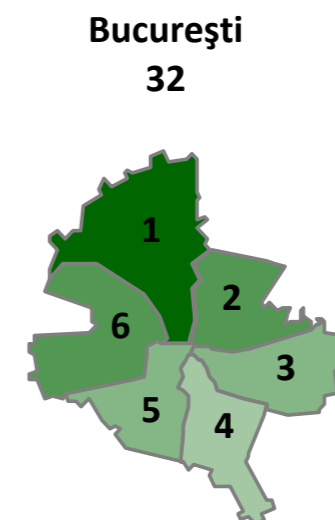
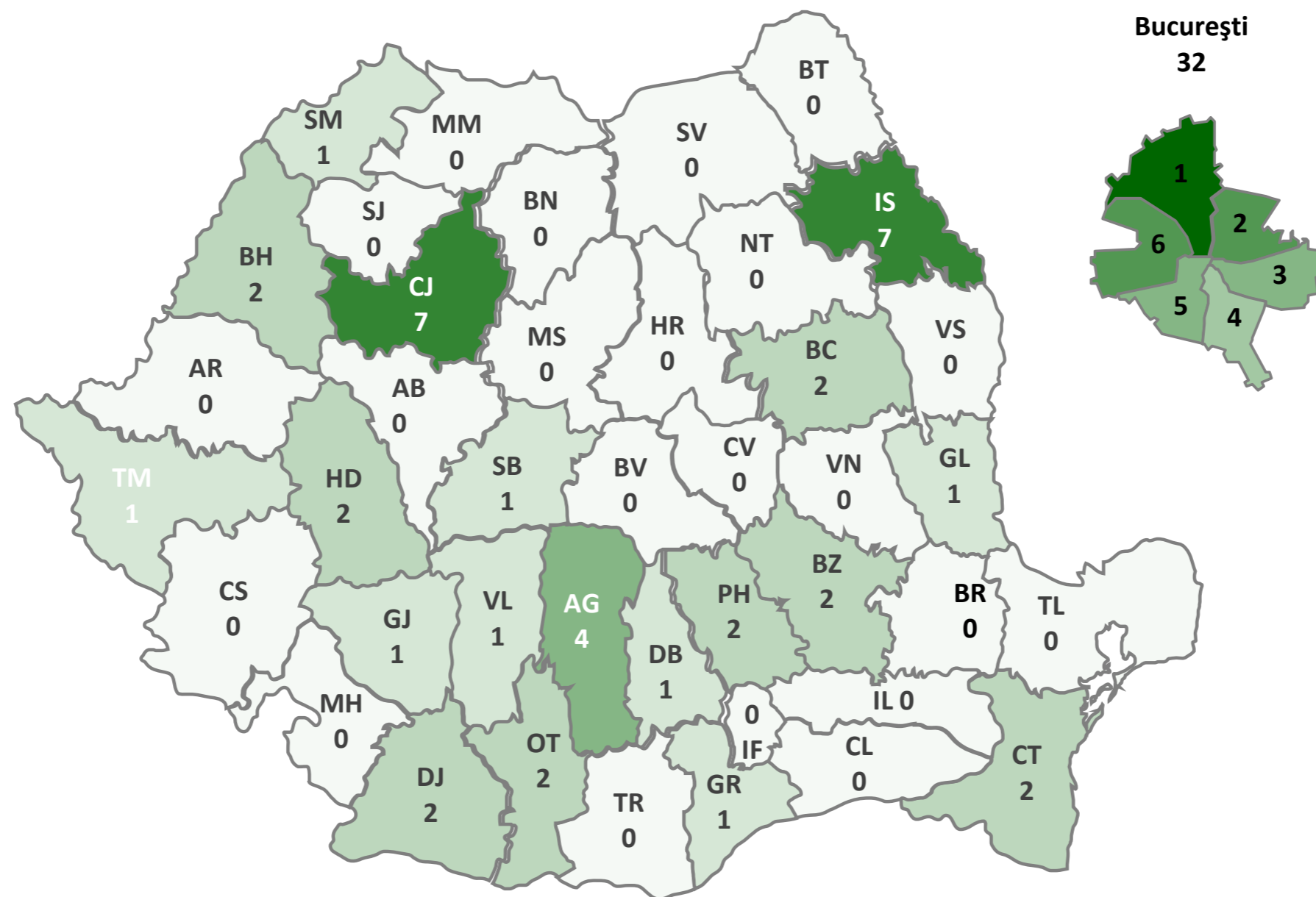
9 iulie 2024

București
(88,4%)

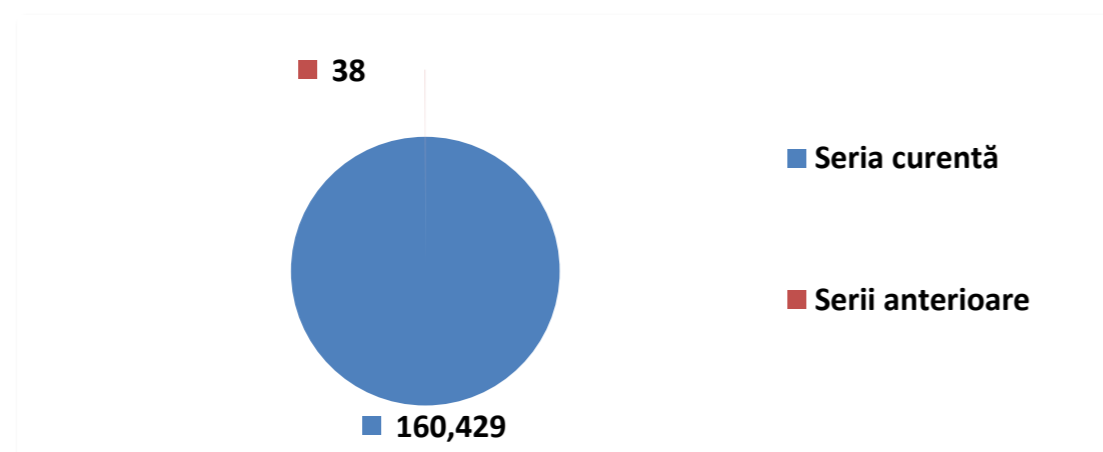


Harta mediilor de 10 la Evaluare Națională

9 iulie 2024

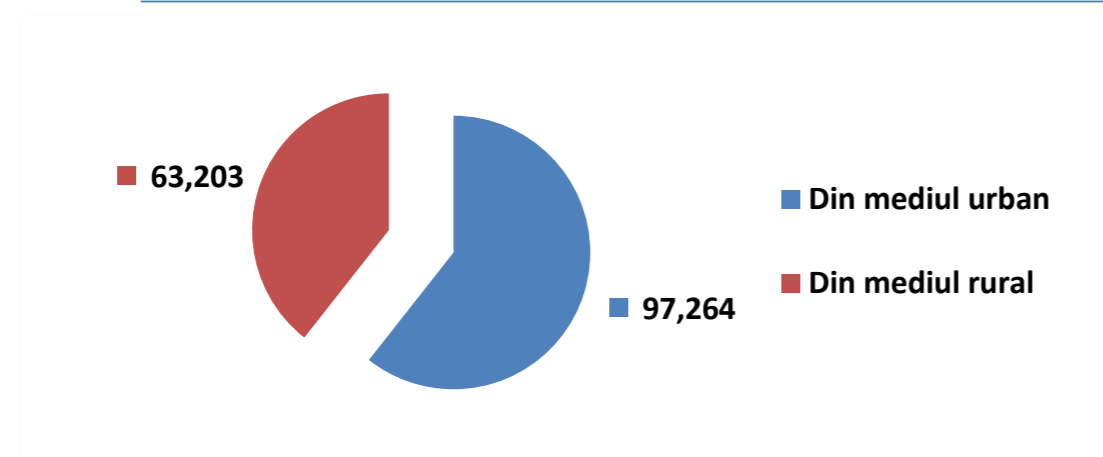


Prezență evaluare națională pe județe																		
Județ	Candidați înscrși	Candidați prezenți Română	% prezenți Română	Candidați absenți Română	Candidați eliminați din examen Română	Candidați eliminați cu 1 Română	Candidați înscrși Maternă	Candidați prezenți Maternă	% prezenți Maternă	Candidați absenți Maternă	Candidați eliminați din examen Maternă	Candidați eliminați cu 1 Maternă	Candidați prezenți Matematică	% prezenți Matematică	Candidați absenți Matematică	Candidați eliminați din examen Matematică	Candidați eliminați cu 1 Matematică	Județ
AB	2,580	2,485	96.3%	95	0	0	63	62	98.4%	1	0	0	2,479	96.1%	101	0	0	AB
AG	4,939	4,746	96.1%	193	0	0	0	0		0	0	0	4,737	95.9%	202	0	0	AG
AR	3,363	3,140	93.4%	223	0	0	200	193	96.5%	7	0	0	3,135	93.2%	228	0	0	AR
B	16,760	16,574	98.9%	186	0	0	222	222	100.0%	0	0	0	16,567	98.8%	193	0	0	B
BC	4,995	4,684	93.8%	311	0	0	20	15	75.0%	5	0	0	4,675	93.6%	320	0	0	BC
BH	4,824	4,408	91.4%	416	0	0	946	828	87.5%	118	0	0	4,394	91.1%	430	0	0	BH
BN	2,617	2,518	96.2%	99	0	0	76	75	98.7%	1	0	0	2,516	96.1%	101	0	0	BN
BR	2,089	1,876	89.8%	213	0	0	0	0		0	0	0	1,872	89.6%	217	0	0	BR
BT	3,650	3,472	95.1%	178	0	0	0	0		0	0	0	3,466	95.0%	184	0	0	BT
BV	4,617	4,514	97.8%	103	0	0	420	414	98.6%	6	0	0	4,501	97.5%	116	0	0	BV
BZ	3,365	3,151	93.6%	214	0	0	0	0		0	0	0	3,134	93.1%	231	0	0	BZ
CJ	5,276	5,119	97.0%	157	0	0	628	620	98.7%	8	0	0	5,117	97.0%	159	0	0	CJ
CL	2,160	2,015	93.3%	145	0	0	0	0		0	0	0	2,006	92.9%	154	0	0	CL
CS	1,690	1,592	94.2%	98	0	0	16	16	100.0%	0	0	0	1,586	93.8%	104	0	0	CS
CT	6,103	6,017	98.6%	86	0	0	0	0		0	0	0	6,009	98.5%	94	0	0	CT
CV	1,651	1,542	93.4%	109	0	0	1,173	1,116	95.1%	57	0	0	1,534	92.9%	117	0	0	CV
DB	3,876	3,626	93.6%	250	0	0	0	0		0	0	0	3,616	93.3%	260	0	0	DB
DJ	4,386	4,098	93.4%	288	0	0	0	0		0	0	0	4,094	93.3%	292	0	0	DJ
GJ	2,650	2,600	98.1%	50	0	0	0	0		0	0	0	2,591	97.8%	59	0	0	GJ
GL	4,044	3,870	95.7%	174	0	0	0	0		0	0	0	3,856	95.4%	188	0	0	GL
GR	1,860	1,749	94.0%	111	0	0	0	0		0	0	0	1,744	93.8%	116	0	0	GR
HD	2,736	2,606	95.2%	130	0	0	74	74	100.0%	0	0	0	2,602	95.1%	134	0	0	HD
HR	2,646	2,588	97.8%	58	0	0	2,258	2,207	97.7%	51	0	0	2,588	97.8%	58	0	0	HR
IF	3,631	3,571	98.3%	60	0	0	13	13	100.0%	0	0	0	3,563	98.1%	68	0	0	IF
IL	1,942	1,860	95.8%	82	0	0	0	0		0	0	0	1,846	95.1%	96	0	0	IL
IS	7,038	6,767	96.1%	270	1	0	0	0		0	0	0	6,749	95.9%	289	0	0	IS
MH	1,765	1,615	91.5%	150	0	0	0	0		0	0	0	1,608	91.1%	157	0	0	MH
MM	3,642	3,479	95.5%	163	0	0	129	126	97.7%	3	0	0	3,461	95.0%	181	0	0	MM
MS	4,216	4,008	95.1%	208	0	0	1,450	1,360	93.8%	90	0	0	3,991	94.7%	225	0	0	MS
NT	3,972	3,928	98.9%	44	0	0	0	0		0	0	0	3,927	98.9%	45	0	0	NT
OT	2,908	2,598	89.3%	310	0	0	0	0		0	0	0	2,593	89.2%	315	0	0	OT
PH	5,880	5,709	97.1%	171	0	0	0	0		0	0	0	5,709	97.1%	171	0	0	PH
SB	3,340	3,163	94.7%	177	0	0	392	389	99.2%	3	0	0	3,142	94.1%	198	0	0	SB
SJ	1,923	1,766	91.8%	157	0	0	401	383	95.5%	18	0	0	1,751	91.1%	172	0	0	SJ
SM	2,740	2,469	90.1%	271	0	0	869	765	88.0%	104	0	0	2,454	89.6%	286	0	0	SM
SV	6,514	6,191	95.0%	323	0	0	0	0		0	0	0	6,176	94.8%	338	0	0	SV
TL	1,550	1,520	98.1%	30	0	0	0	0		0	0	0	1,519	98.0%	31	0	0	TL
TM	5,503	5,275	95.9%	228	0	0	317	315	99.4%	2	0	0	5,264	95.7%	239	0	0	TM
TR	2,234	2,010	90.0%	224	0	0	0	0		0	0	0	2,004	89.7%	230	0	0	TR
VL	2,543	2,459	96.7%	84	0	0	0	0		0	0	0	2,449	96.3%	94	0	0	VL
VN	2,730	2,637	96.6%	93	0	0	0	0		0	0	0	2,621	96.0%	109	0	0	VN
VS	3,519	3,382	96.1%	137	0	0	0	0		0	0	0	3,367	95.7%	152	0	0	VS
TOTAL	160,467	153,397	95.6%	7,069	1	0	9,667	9,193	95.1%	474	0	0	153,013	95.4%	7,454	0	0	TOTAL



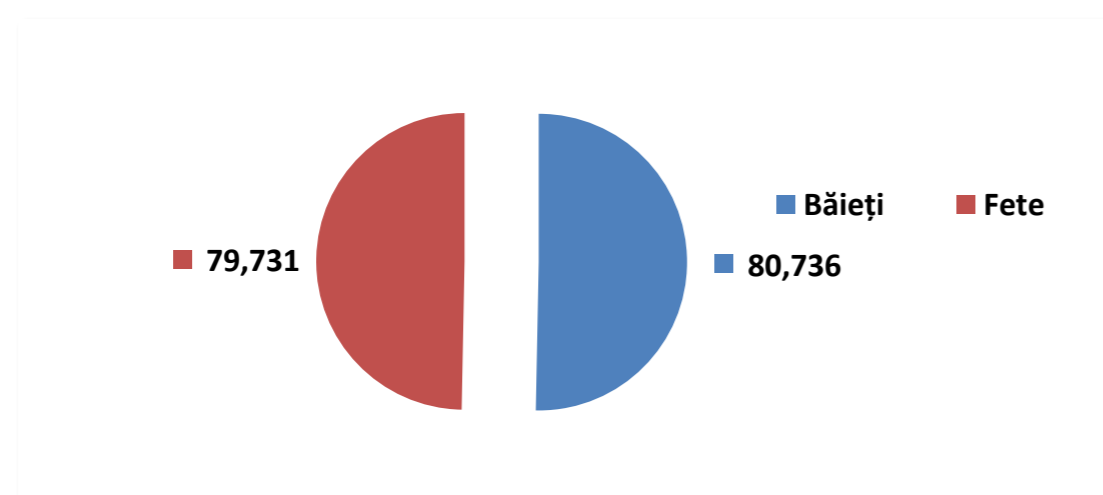
Baza de date conține 160467.0 de copii înscriși la evaluarea națională

- 160429.0 (100%) copii din seria curentă;
- 38.0 (000%) copii din serii anterioare.



Din cei 160467.0 de copii înscriși la evaluarea națională

- 97264.0 (061%) copii sunt din mediul urban;
- 63203.0 (039%) sunt din mediul rural.

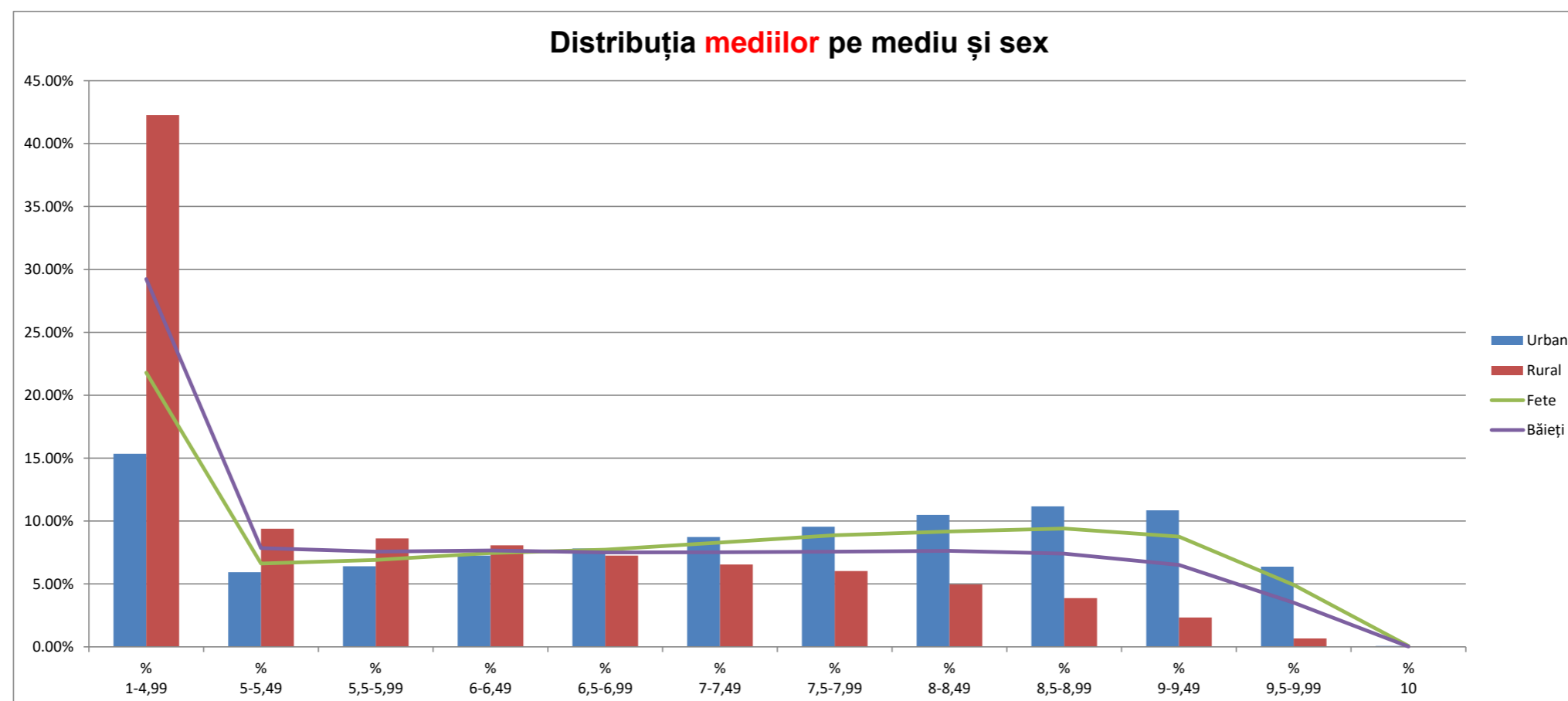


Din cei 160467.0 de copii înscriși la evaluarea națională

- 80736.0 (050%) sunt băieți;
- 79731.0 (050%) sunt fete.

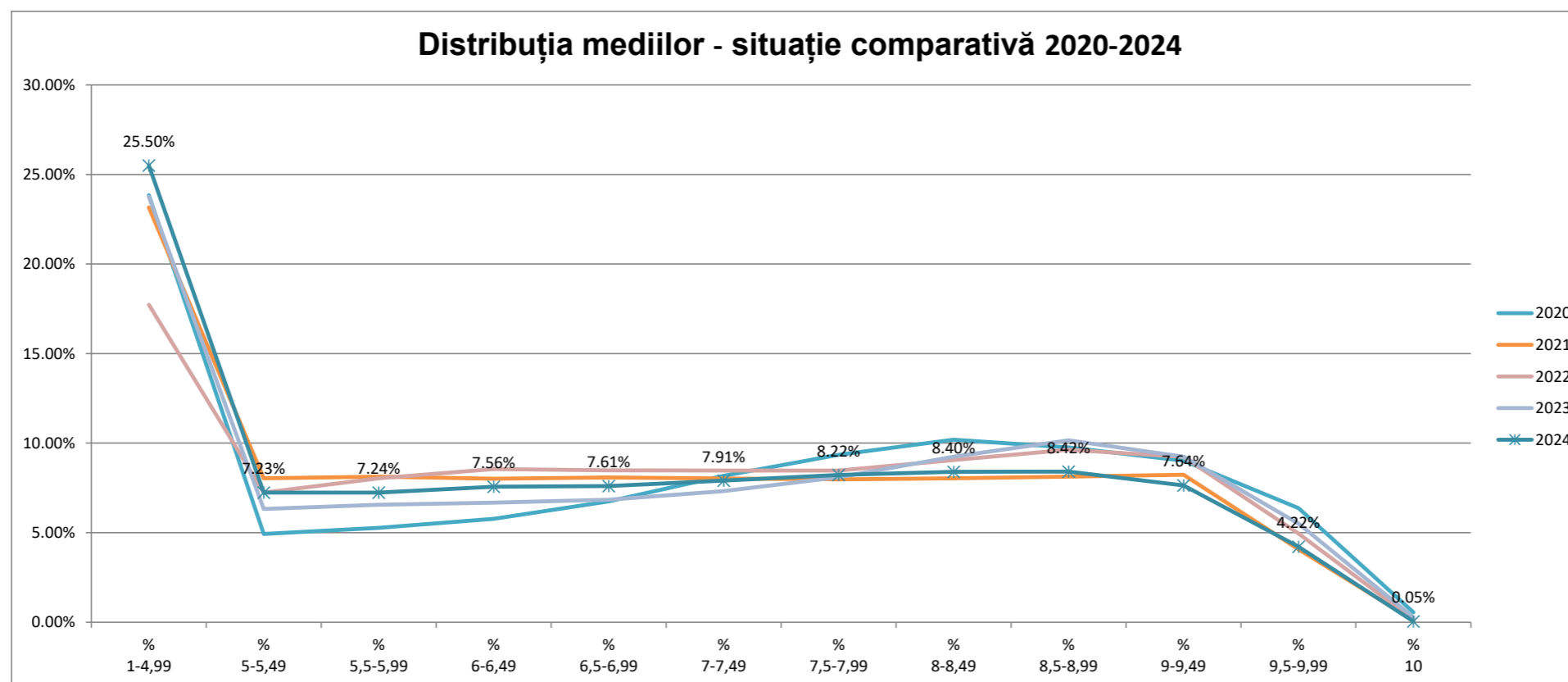
Situția pe medii la evaluarea națională																												
Județ	Candidați înscriși	Candidați cu medii	Cu medii 1-4,99	Cu medii 5-5,49	Cu medii 5,5-5,99	Cu medii 6-6,49	Cu medii 6,5-6,99	Cu medii 7-7,49	Cu medii 7,5-7,99	Cu medii 8-8,49	Cu medii 8,5-8,99	Cu medii 9-9,49	Cu medii 9,5-9,99	Cu media 10	% 1-4,99	% 5-5,49	% 5,5-5,99	% 6-6,49	% 6,5-6,99	% 7-7,49	% 7,5-7,99	% 8-8,49	% 8,5-8,99	% 9-9,49	% 9,5-9,99	% 10	% 5-10	Județ
AB	2,580	2,478	623	138	169	173	184	198	213	202	236	237	105	0	25.1%	5.6%	6.8%	7.0%	7.4%	8.0%	8.6%	8.2%	9.5%	9.6%	4.2%	0.0%	74.9%	AB
AG	4,939	4,734	1,129	256	297	302	337	382	379	409	485	478	276	4	23.8%	5.4%	6.3%	6.4%	7.1%	8.1%	8.0%	8.6%	10.2%	10.1%	5.8%	0.1%	76.2%	AG
AR	3,363	3,133	955	269	280	268	245	242	263	244	192	121	54	0	30.5%	8.6%	8.9%	8.6%	7.8%	7.7%	8.4%	7.8%	6.1%	3.9%	1.7%	0.0%	69.5%	AR
B	16,760	16,566	1,927	811	862	1,077	1,168	1,313	1,492	1,785	2,029	2,285	1,785	32	11.6%	4.9%	5.2%	6.5%	7.1%	7.9%	9.0%	10.8%	12.2%	13.8%	10.8%	0.2%	88.4%	B
BC	4,995	4,675	1,205	353	355	415	346	381	357	387	338	340	196	2	25.8%	7.6%	7.6%	8.9%	7.4%	8.1%	7.6%	8.3%	7.2%	7.3%	4.2%	0.0%	74.2%	BC
BH	4,824	4,391	1,250	334	308	302	349	363	381	343	350	270	139	2	28.5%	7.6%	7.0%	6.9%	7.9%	8.3%	8.7%	7.8%	8.0%	6.1%	3.2%	0.0%	71.5%	BH
BN	2,617	2,515	599	217	228	243	216	203	240	208	184	141	36	0	23.8%	8.6%	9.1%	9.7%	8.6%	8.1%	9.5%	8.3%	7.3%	5.6%	1.4%	0.0%	76.2%	BN
BR	2,089	1,872	365	121	123	151	171	176	180	179	175	149	82	0	19.5%	6.5%	6.6%	8.1%	9.1%	9.4%	9.6%	9.6%	9.3%	8.0%	4.4%	0.0%	80.5%	BR
BT	3,650	3,461	1,189	313	275	267	275	231	229	235	214	160	73	0	34.4%	9.0%	7.9%	7.7%	7.9%	6.7%	6.6%	6.8%	6.2%	4.6%	2.1%	0.0%	65.6%	BT
BV	4,617	4,501	1,061	276	301	303	334	364	448	378	465	358	213	0	23.6%	6.1%	6.7%	6.7%	7.4%	8.1%	10.0%	8.4%	10.3%	8.0%	4.7%	0.0%	76.4%	BV
BZ	3,365	3,133	936	226	202	243	230	245	234	265	232	186	132	2	29.9%	7.2%	6.4%	7.8%	7.3%	8.1%	7.5%	8.5%	7.4%	5.9%	4.2%	0.1%	70.1%	BZ
CJ	5,276	5,112	712	265	324	350	373	460	471	570	608	589	383	7	13.9%	5.2%	6.3%	6.8%	7.3%	9.0%	9.2%	11.2%	11.9%	11.5%	7.5%	0.1%	86.1%	CJ
CL	2,160	2,006	786	190	158	145	175	161	141	91	82	51	26	0	39.2%	9.5%	7.9%	7.2%	8.7%	8.0%	7.0%	4.5%	4.1%	2.5%	1.3%	0.0%	60.8%	CL
CS	1,690	1,585	572	148	120	133	131	120	106	97	69	71	18	0	36.1%	9.3%	7.6%	8.4%	8.3%	7.6%	6.7%	6.1%	4.4%	4.5%	1.1%	0.0%	63.9%	CS
CT	6,103	6,003	1,570	416	402	435	458	478	468	507	524	484	259	2	26.2%	6.9%	6.7%	7.2%	7.6%	8.0%	7.8%	8.4%	8.7%	8.1%	4.3%	0.0%	73.8%	CT
CV	1,651	1,528	431	112	129	168	157	152	143	110	83	37	6	0	28.2%	7.3%	8.4%	11.0%	10.3%	9.9%	9.4%	7.2%	5.4%	2.4%	0.4%	0.0%	71.8%	CV
DB	3,876	3,610	1,139	309	258	268	259	288	282	295	226	210	75	1	31.6%	8.6%	7.1%	7.4%	7.2%	8.0%	7.8%	8.2%	6.3%	5.8%	2.1%	0.0%	68.4%	DB
DJ	4,386	4,084	1,154	255	255	254	264	281	292	323	367	414	223	2	28.3%	6.2%	6.2%	6.2%	6.5%	6.9%	7.1%	7.9%	9.0%	10.1%	5.5%	0.0%	71.7%	DJ
GJ	2,650	2,590	636	205	216	237	215	195	204	223	205	169	84	1	24.6%	7.9%	8.3%	9.2%	8.3%	7.5%	7.9%	8.6%	7.9%	6.5%	3.2%	0.0%	75.4%	GJ
GL	4,044	3,854	800	268	273	287	266	327	344	378	368	374	168	1	20.8%	7.0%	7.1%	7.4%	6.9%	8.5%	8.9%	9.8%	9.5%	9.7%	4.4%	0.0%	79.2%	GL
GR	1,860	1,743	431	166	183	182	154	153	139	131	115	68	20	1	24.7%	9.5%	10.5%	10.4%	8.8%	8.8%	8.0%	7.5%	6.6%	3.9%	1.1%	0.1%	75.3%	GR
HD	2,736	2,600	688	214	203	213	218	215	245	205	207	150	40	2	26.5%	8.2%	7.8%	8.2%	8.4%	8.3%	9.4%	7.9%	8.0%	5.8%	1.5%	0.1%	73.5%	HD
HR	2,646	2,580	697	254	238	227	239	270	222	190	160	68	15	0	27.0%	9.8%	9.2%	8.8%	9.3%	10.5%	8.6%	7.4%	6.2%	2.6%	0.6%	0.0%	73.0%	HR
IF	3,631	3,563	1,000	309	297	306	265	303	273	249	263	209	89	0	28.1%	8.7%	8.3%	8.6%	7.4%	8.5%	7.7%	7.0%	7.4%	5.9%	2.5%	0.0%	71.9%	IF
IL	1,942	1,845	618	144	165	144	128	135	120	123	130	99	39	0	33.5%	7.8%	8.9%	7.8%	6.9%	7.3%	6.5%	6.7%	7.0%	5.4%	2.1%	0.0%	66.5%	IL
IS	7,038	6,739	1,636	523	495	505	526	464	482	565	576	583	377	7	24.3%	7.8%	7.3%	7.5%	7.8%	6.9%	7.2%	8.4%	8.5%	8.7%	5.6%	0.1%	75.7%	IS
MH	1,765	1,608	579	147	109	116	133	114	97	85	85	98	45	0	36.0%	9.1%	6.8%	7.2%	8.3%	7.1%	6.0%	5.3%	5.3%	6.1%	2.8%	0.0%	64.0%	MH
MM	3,642	3,461	953	265	259	284	267	295	293	290	274	191	90	0	27.5%	7.7%	7.5%	8.2%	7.7%	8.5%	8.5%	8.4%	7.9%	5.5%	2.6%	0.0%	72.5%	MM
MS	4,216	3,987	1,252	284	335	327	330	302	343	295	253	199	67	0	31.4%	7.1%	8.4%	8.2%	8.3%	7.6%	8.6%	7.4%	6.3%	5.0%	1.7%	0.0%	68.6%	MS
NT	3,972	3,924	1,240	267	292	284	252	259	313	316	302	282	117	0	31.6%	6.8%	7.4%	7.2%	6.4%	6.6%	8.0%	8.1%	7.7%	7.2%	3.0%	0.0%	68.4%	NT
OT	2,908	2,591	812	212	189	209	176	187	189	175	194	172	74	2	31.3%	8.2%	7.3%	8.1%	6.8%	7.2%	7.3%	6.8%	7.5%	6.6%	2.9%	0.1%	68.7%	OT
PH	5,880	5,705	1,123	399	427	416	456	482	567	541	574	509	209	2	19.7%	7.0%	7.5%	7.3%	8.0%	8.4%	9.9%	9.5%	10.1%	8.9%	3.7%	0.0%	80.3%	PH
SB	3,340	3,142	738	203	212	244	232	236	247	320	346	242	121	1	23.5%	6.5%	6.7%	7.8%	7.4%	7.5%	7.9%	10.2%	11.0%	7.7%	3.9%	0.0%	76.5%	SB
SJ	1,923	1,744	524	113	124	118	140	163	153	139	127	103	40	0	30.0%	6.5%	7.1%	6.8%	8.0%	9.3%	8.8%	8.0%	7.3%	5.9%	2.3%	0.0%	70.0%	SJ
SM	2,740	2,446	730	200	199	194	211	192	218	193	148	120	40	1	29.8%	8.2%	8.1%	7.9%	8.6%	7.8%	8.9%	7.9%	6.1%	4.9%	1.6%	0.0%	70.2%	SM
SV	6,514	6,175	1,463	495	535	510	539	526	545	555	458	374	175	0	23.7%	8.0%	8.7%	8.3%	8.7%	8.5%	8.8%	9.0%	7.4%	6.1%	2.8%	0.0%	76.3%	SV
TL	1,550	1,517	535	114	135	126	112	116	118	103	71	64	23	0	35.3%	7.5%	8.9%	8.3%	7.4%	7.6%	7.8%	6.8%	4.7%	4.2%	1.5%	0.0%	64.7%	TL
TM	5,503	5,263	1,407	394	354	347	381	389	422	419	463	435	251	1	26.7%	7.5%	6.7%	6.6%	7.2%	7.4%	8.0%	8.0%	8.8%	8.3%	4.8%	0.0%	73.3%	TM
TR	2,234	2,003	699	204	167	166	149	140	140	106	107	88	37	0	34.9%	10.2%	8.3%	8.3%	7.4%	7.0%	7.0%	5.3%	5.3%	4.4%	1.8%	0.0%	65.1%	TR
VL	2,543	2,449	605	164	185	193	172	217	191	209	210	197	105	1	24.7%	6.7%	7.6%	7.9%	7.0%	8.9%	7.8%	8.5%	8.6%	8.0%	4.3%	0.0%	75.3%	VL
VN	2,730	2,620	871	206	166	169	181	156	175	198	194	202	102	0	33.2%	7.9%	6.3%	6.5%	6.9%	6.0%	6.7%	7.6%	7.4%	7.7%	3.9%	0.0%	66.8%	VN
VS	3,519	3,367	1,352	303	260	262	220	215	212	212	178	107	46	0	40.2%	9.0%	7.7%	7.8%	6.5%	6.4%	6.3%	6.3%	5.3%	3.2%	1.4%	0.0%	59.8%	VS
TOTAL	160,467	152,903	38,992	11,062	11,064	11,563	11,634	12,089	12,571	12,848	12,867	11,684	6,455	74	25.5%	7.2%	7.2%	7.6%	7.6%	7.9%	8.2%	8.4%	8.4%	7.6%	4.2%	0.0%	74.5%	TOTAL

Distribuția mediilor pe mediu și sex												
Mediu	% 1-4,99	% 5-5,49	% 5,5-5,99	% 6-6,49	% 6,5-6,99	% 7-7,49	% 7,5-7,99	% 8-8,49	% 8,5-8,99	% 9-9,49	% 9,5-9,99	% 10
Urban	15.35%	5.93%	6.40%	7.26%	7.82%	8.73%	9.55%	10.49%	11.16%	10.86%	6.38%	0.08%
Rural	42.27%	9.38%	8.62%	8.07%	7.25%	6.55%	6.03%	4.96%	3.87%	2.33%	0.66%	0.00%
Sex	% 1-4,99	% 5-5,49	% 5,5-5,99	% 6-6,49	% 6,5-6,99	% 7-7,49	% 7,5-7,99	% 8-8,49	% 8,5-8,99	% 9-9,49	% 9,5-9,99	% 10
Fete	21.79%	6.63%	6.90%	7.46%	7.72%	8.29%	8.88%	9.17%	9.41%	8.77%	4.92%	0.07%
Băieți	29.23%	7.85%	7.57%	7.67%	7.50%	7.52%	7.56%	7.63%	7.42%	6.51%	3.52%	0.02%

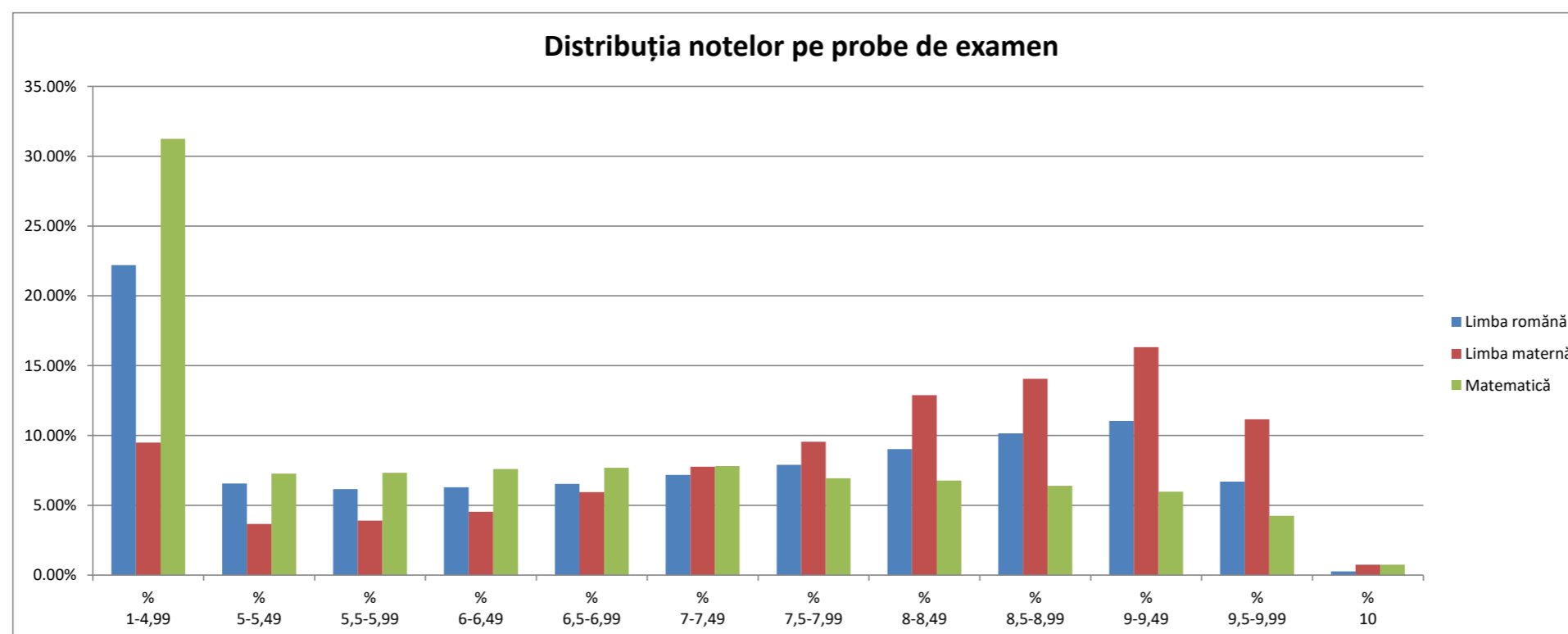


Distribuția mediilor - situație comparativă 2011-2024

An	% 1-4,99	% 5-5,49	% 5,5-5,99	% 6-6,49	% 6,5-6,99	% 7-7,49	% 7,5-7,99	% 8-8,49	% 8,5-8,99	% 9-9,49	% 9,5-9,99	% 10	Cu medii 1-4,99	Cu medii 5-5,49	Cu medii 5,5-5,99	Cu medii 6-6,49	Cu medii 6,5-6,99	Cu medii 7-7,49	Cu medii 7,5-7,99	Cu medii 8-8,49	Cu medii 8,5-8,99	Cu medii 9-9,49	Cu medii 9,5-9,99	Cu media 10
2011	18.21%	8.86%	10.15%	10.84%	10.52%	9.69%	8.51%	7.49%	6.48%	5.59%	3.45%	0.20%	38,897	18,931	21,685	23,166	22,463	20,695	18,189	16,004	13,835	11,946	7,375	434
2012	33.88%	8.04%	8.13%	7.84%	7.60%	6.93%	6.47%	6.06%	5.72%	5.26%	3.82%	0.25%	56,607	13,431	13,588	13,106	12,696	11,586	10,813	10,130	9,566	8,782	6,383	412
2013	24.11%	6.78%	6.79%	6.77%	6.57%	6.68%	6.87%	7.56%	8.79%	9.97%	8.59%	0.53%	39,137	11,001	11,022	10,992	10,662	10,843	11,159	12,275	14,265	16,179	13,940	856
2014	28.93%	7.34%	7.50%	7.46%	7.64%	7.81%	7.89%	7.81%	7.30%	6.31%	3.88%	0.14%	46,290	11,742	11,997	11,937	12,223	12,491	12,623	12,504	11,674	10,102	6,203	225
2015	20.64%	6.84%	7.46%	7.71%	7.78%	7.76%	7.78%	8.22%	9.01%	9.46%	7.05%	0.29%	32,736	10,846	11,836	12,233	12,336	12,303	12,340	13,030	14,283	15,003	11,174	456
2016	24.98%	6.95%	7.26%	7.48%	7.74%	8.00%	8.50%	9.10%	8.90%	6.94%	3.97%	0.16%	37,137	10,325	10,788	11,126	11,509	11,896	12,638	13,533	13,229	10,321	5,904	241
2017	23.04%	6.16%	6.65%	6.92%	7.33%	7.57%	7.87%	8.39%	9.06%	9.29%	7.38%	0.35%	32,418	8,673	9,354	9,735	10,312	10,651	11,070	11,809	12,747	13,066	10,380	497
2018	26.42%	7.14%	7.71%	8.39%	8.90%	8.97%	8.21%	7.39%	6.55%	5.88%	4.20%	0.24%	37,738	10,196	11,015	11,988	12,708	12,815	11,725	10,552	9,359	8,402	6,004	345
2019	26.76%	7.07%	7.40%	7.85%	8.30%	8.53%	8.35%	7.90%	6.94%	6.18%	4.40%	0.31%	39,105	10,331	10,812	11,467	12,131	12,459	12,204	11,538	10,144	9,024	6,431	459
2020	23.84%	4.93%	5.27%	5.78%	6.74%	8.18%	9.35%	10.19%	9.76%	9.02%	6.38%	0.56%	38,306	7,920	8,471	9,284	10,835	13,136	15,023	16,376	15,681	14,495	10,244	892
2021	23.16%	8.04%	8.13%	8.01%	8.08%	8.03%	7.98%	8.04%	8.13%	8.23%	4.07%	0.11%	28,525	9,901	10,012	9,870	9,956	9,887	9,834	9,901	10,011	10,141	5,015	132
2022	17.73%	7.24%	8.03%	8.55%	8.48%	8.47%	8.47%	9.06%	9.63%	9.23%	4.95%	0.15%	26,328	10,751	11,929	12,700	12,597	12,583	12,571	13,451	14,295	13,713	7,355	221
2023	23.75%	6.33%	6.56%	6.67%	6.84%	7.32%	8.10%	9.24%	10.16%	9.25%	5.50%	0.28%	36,608	9,752	10,105	10,282	10,547	11,276	12,484	14,242	15,651	14,255	8,484	429
2024	25.50%	7.23%	7.24%	7.56%	7.61%	7.91%	8.22%	8.40%	8.42%	7.64%	4.22%	0.05%	38,992	11,062	11,064	11,563	11,634	12,089	12,571	12,848	12,867	11,684	6,455	74



Distribuția notelor pe probe de examen												
Proba	% 1-4,99	% 5-5,49	% 5,5-5,99	% 6-6,49	% 6,5-6,99	% 7-7,49	% 7,5-7,99	% 8-8,49	% 8,5-8,99	% 9-9,49	% 9,5-9,99	% 10
Limba română	22.20%	6.57%	6.15%	6.29%	6.53%	7.18%	7.90%	9.02%	10.16%	11.04%	6.70%	0.27%
Limba maternă	9.49%	3.65%	3.91%	4.53%	5.94%	7.77%	9.55%	12.89%	14.05%	16.33%	11.16%	0.74%
Matematică	31.24%	7.26%	7.32%	7.60%	7.69%	7.81%	6.94%	6.76%	6.40%	5.98%	4.25%	0.74%

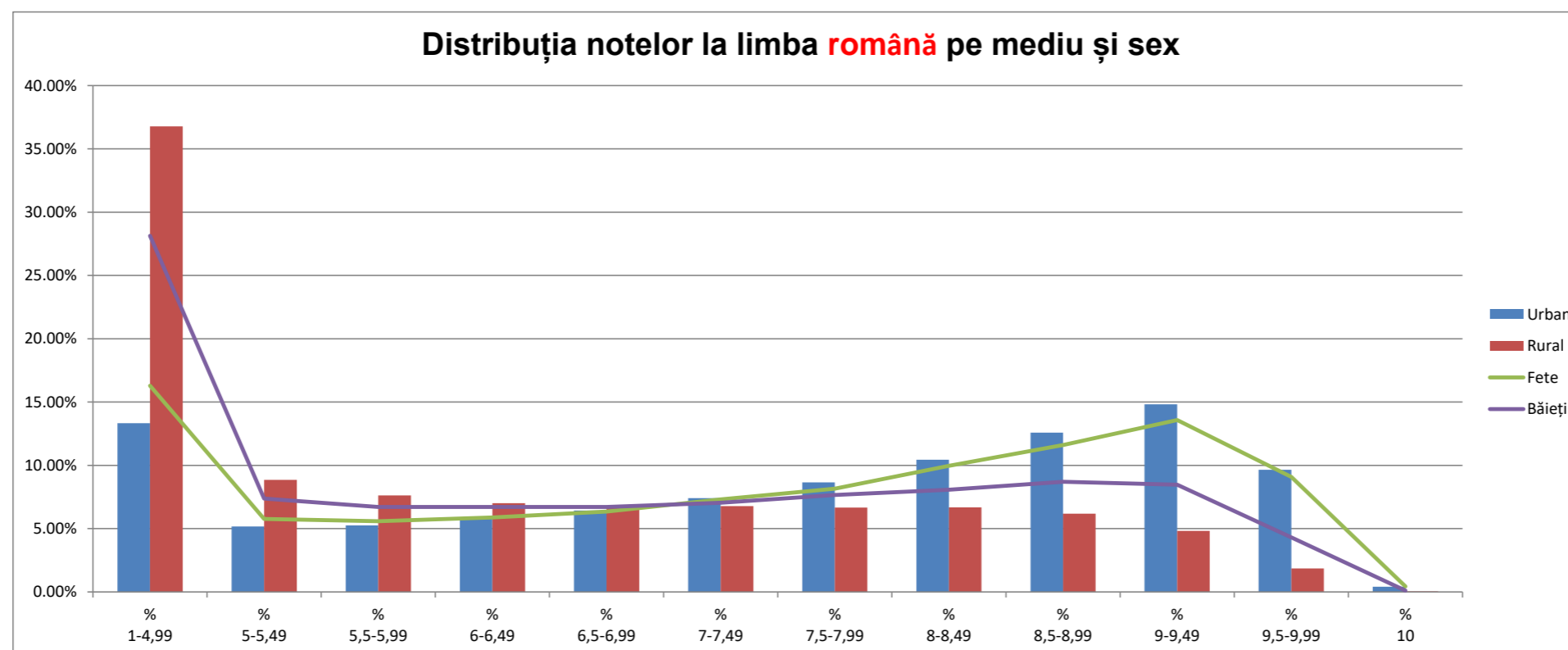


Rezultatele la limba română																											
Județ	Candidați înscriși	Candidați evaluați Română	Cu note 1-4,99	Cu note 5-5,49	Cu note 5,5-5,99	Cu note 6-6,49	Cu note 6,5-6,99	Cu note 7-7,49	Cu note 7,5-7,99	Cu note 8-8,49	Cu note 8,5-8,99	Cu note 9-9,49	Cu note 9,5-9,99	Cu nota 10	% 1-4,99	% 5-5,49	% 5,5-5,99	% 6-6,49	% 6,5-6,99	% 7-7,49	% 7,5-7,99	% 8-8,49	% 8,5-8,99	% 9-9,49	% 9,5-9,99	% 10	Județ
AB	2,580	2,485	506	137	134	155	157	166	221	216	267	307	207	12	20.4%	5.5%	5.4%	6.2%	6.3%	6.7%	8.9%	8.7%	10.7%	12.4%	8.3%	0.5%	AB
AG	4,939	4,746	995	245	251	247	269	295	342	432	551	646	450	23	21.0%	5.2%	5.3%	5.2%	5.7%	6.2%	7.2%	9.1%	11.6%	13.6%	9.5%	0.5%	AG
AR	3,363	3,140	814	236	224	235	230	236	270	273	275	248	97	2	25.9%	7.5%	7.1%	7.5%	7.3%	7.5%	8.6%	8.7%	8.8%	7.9%	3.1%	0.1%	AR
B	16,760	16,574	1,612	706	748	810	941	1,099	1,353	1,751	2,190	2,866	2,379	119	9.7%	4.3%	4.5%	4.9%	5.7%	6.6%	8.2%	10.6%	13.2%	17.3%	14.4%	0.7%	B
BC	4,995	4,684	1,006	310	309	326	294	344	374	425	480	463	340	13	21.5%	6.6%	6.6%	7.0%	6.3%	7.3%	8.0%	9.1%	10.2%	9.9%	7.3%	0.3%	BC
BH	4,824	4,408	1,186	277	272	250	283	307	363	382	400	437	241	10	26.9%	6.3%	6.2%	5.7%	6.4%	7.0%	8.2%	8.7%	9.1%	9.9%	5.5%	0.2%	BH
BN	2,617	2,518	501	205	187	190	185	209	216	248	256	238	80	3	19.9%	8.1%	7.4%	7.5%	7.3%	8.3%	8.6%	9.8%	10.2%	9.5%	3.2%	0.1%	BN
BR	2,089	1,876	250	126	118	117	136	158	159	232	221	223	131	5	13.3%	6.7%	6.3%	6.2%	7.2%	8.4%	8.5%	12.4%	11.8%	11.9%	7.0%	0.3%	BR
BT	3,650	3,472	979	263	258	238	241	253	249	264	311	263	151	2	28.2%	7.6%	7.4%	6.9%	6.9%	7.3%	7.2%	7.6%	9.0%	7.6%	4.3%	0.1%	BT
BV	4,617	4,514	894	251	248	287	313	343	372	454	544	526	277	5	19.8%	5.6%	5.5%	6.4%	6.9%	7.6%	8.2%	10.1%	12.1%	11.7%	6.1%	0.1%	BV
BZ	3,365	3,151	750	213	196	181	194	232	232	270	324	319	230	10	23.8%	6.8%	6.2%	5.7%	6.2%	7.4%	7.4%	8.6%	10.3%	10.1%	7.3%	0.3%	BZ
CJ	5,276	5,119	611	241	263	302	309	408	478	534	679	756	509	29	11.9%	4.7%	5.1%	5.9%	6.0%	8.0%	9.3%	10.4%	13.3%	14.8%	9.9%	0.6%	CJ
CL	2,160	2,015	641	173	146	148	134	157	150	165	123	123	52	3	31.8%	8.6%	7.2%	7.3%	6.7%	7.8%	7.4%	8.2%	6.1%	6.1%	2.6%	0.1%	CL
CS	1,690	1,592	462	143	100	127	135	118	123	139	112	96	36	1	29.0%	9.0%	6.3%	8.0%	8.5%	7.4%	7.7%	8.7%	7.0%	6.0%	2.3%	0.1%	CS
CT	6,103	6,017	1,371	341	366	365	402	419	479	573	631	685	374	11	22.8%	5.7%	6.1%	6.1%	6.7%	7.0%	8.0%	9.5%	10.5%	11.4%	6.2%	0.2%	CT
CV	1,651	1,542	647	107	119	128	120	105	109	83	67	43	14	0	42.0%	6.9%	7.7%	8.3%	7.8%	6.8%	7.1%	5.4%	4.3%	2.8%	0.9%	0.0%	CV
DB	3,876	3,626	1,037	233	217	228	222	239	293	305	338	325	182	7	28.6%	6.4%	6.0%	6.3%	6.1%	6.6%	8.1%	8.4%	9.3%	9.0%	5.0%	0.2%	DB
DJ	4,386	4,098	1,043	230	204	228	235	225	292	324	390	555	354	18	25.5%	5.6%	5.0%	5.6%	5.7%	5.5%	7.1%	7.9%	9.5%	13.5%	8.6%	0.4%	DJ
GJ	2,650	2,600	626	192	187	154	177	190	195	210	242	246	169	12	24.1%	7.4%	7.2%	5.9%	6.8%	7.3%	7.5%	8.1%	9.3%	9.5%	6.5%	0.5%	GJ
GL	4,044	3,870	675	236	217	234	245	295	326	356	438	545	294	9	17.4%	6.1%	5.6%	6.0%	6.3%	7.6%	8.4%	9.2%	11.3%	14.1%	7.6%	0.2%	GL
GR	1,860	1,749	386	152	159	153	142	130	143	148	137	144	52	3	22.1%	8.7%	9.1%	8.7%	8.1%	7.4%	8.2%	8.5%	7.8%	8.2%	3.0%	0.2%	GR
HD	2,736	2,606	560	181	172	170	179	212	211	257	277	276	104	7	21.5%	6.9%	6.6%	6.5%	6.9%	8.1%	8.1%	9.9%	10.6%	10.6%	4.0%	0.3%	HD
HR	2,646	2,588	1,234	204	189	187	173	171	143	118	91	57	21	0	47.7%	7.9%	7.3%	7.2%	6.7%	6.6%	5.5%	4.6%	3.5%	2.2%	0.8%	0.0%	HR
IF	3,631	3,571	840	282	262	249	274	269	264	323	335	325	142	6	23.5%	7.9%	7.3%	7.0%	7.7%	7.5%	7.4%	9.0%	9.4%	9.1%	4.0%	0.2%	IF
IL	1,942	1,860	466	160	142	118	134	140	139	145	161	175	77	3	25.1%	8.6%	7.6%	6.3%	7.2%	7.5%	7.5%	7.8%	8.7%	9.4%	4.1%	0.2%	IL
IS	7,038	6,767	1,290	503	465	419	442	474	508	639	649	856	500	22	19.1%	7.4%	6.9%	6.2%	6.5%	7.0%	7.5%	9.4%	9.6%	12.6%	7.4%	0.3%	IS
MH	1,765	1,615	475	113	101	119	112	102	114	115	127	150	86	1	29.4%	7.0%	6.3%	7.4%	6.9%	6.3%	7.1%	7.1%	7.9%	9.3%	5.3%	0.1%	MH
MM	3,642	3,479	817	236	197	224	231	304	280	312	382	332	159	5	23.5%	6.8%	5.7%	6.4%	6.6%	8.7%	8.0%	9.0%	11.0%	9.5%	4.6%	0.1%	MM
MS	4,216	4,008	1,285	282	274	292	281	291	320	320	286	258	115	4	32.1%	7.0%	6.8%	7.3%	7.0%	7.3%	8.0%	8.0%	7.1%	6.4%	2.9%	0.1%	MS
NT	3,972	3,928	1,024	291	244	256	226	257	290	346	393	377	219	5	26.1%	7.4%	6.2%	6.5%	5.8%	6.5%	7.4%	8.8%	10.0%	9.6%	5.6%	0.1%	NT
OT	2,908	2,598	665	193	161	174	164	179	190	212	251	265	137	7	25.6%	7.4%	6.2%	6.7%	6.3%	6.9%	7.3%	8.2%	9.7%	10.2%	5.3%	0.3%	OT
PH	5,880	5,709	814	345	334	337	409	449	501	592	741	760	416	11	14.3%	6.0%	5.9%	5.9%	7.2%	7.9%	8.8%	10.4%	13.0%	13.3%	7.3%	0.2%	PH
SB	3,340	3,163	627	199	155	188	204	239	263	309	363	414	199	3	19.8%	6.3%	4.9%	5.9%	6.4%	7.6%	8.3%	9.8%	11.5%	13.1%	6.3%	0.1%	SB
SJ	1,923	1,766	492	108	121	108	126	128	128	137	154	177	85	2	27.9%	6.1%	6.9%	6.1%	7.1%	7.2%	7.2%	7.8%	8.7%	10.0%	4.8%	0.1%	SJ
SM	2,740	2,469	742	183	167	162	159	181	215	214	219	158	65	4	30.1%	7.4%	6.8%	6.6%	6.4%	7.3%	8.7%	8.7%	8.9%	6.4%	2.6%	0.2%	SM
SV	6,514	6,191	1,258	456	445	421	427	493	515	567	635	613	354	7	20.3%	7.4%	7.2%	6.8%	6.9%	8.0%	8.3%	9.2%	10.3%	9.9%	5.7%	0.1%	SV
TL	1,550	1,520	428	129	94	103	113	122	118	122	110	125	55	1	28.2%	8.5%	6.2%	6.8%	7.4%	8.0%	7.8%	8.0%	7.2%	8.2%	3.6%	0.1%	TL
TM	5,503	5,275	1,165	366	312	332	335	343	442	498	512	595	363	12	22.1%	6.9%	5.9%	6.3%	6.4%	6.5%	8.4%	9.4%	9.7%	11.3%	6.9%	0.2%	TM
TR	2,234	2,010	603	182	134	150	128	142	146	138	162	144	78	3	30.0%	9.1%	6.7%	7.5%	6.4%	7.1%	7.3%	6.9%	8.1%	7.2%	3.9%	0.1%	TR
VL	2,543	2,459	463	157	146	155	167	189	184	238	247	300	206	7	18.8%	6.4%	5.9%	6.3%	6.8%	7.7%	7.5%	9.7%	10.0%	12.2%	8.4%	0.3%	VL
VN	2,730	2,637	751	194	134	154	138	174	172	210	240	277	186	7	28.5%	7.4%	5.1%	5.8%	5.2%	6.6%	6.5%	8.0%	9.1%	10.5%	7.1%	0.3%	VN
VS	3,519	3,382	1,056	290	262	231	238	224	239	242	267	240	91	2	31.2%	8.6%	7.7%	6.8%	7.0%	6.6%	7.1%	7.2%	7.9%	7.1%	2.7%	0.1%	VS
TOTAL	160,467	153,397	34,047	10,071	9,434	9,652	10,024	11,011	12,121	13,838	15,578	16,928	10,277	416	22.2%	6.6%	6.2%	6.3%	6.5%	7.2%	7.9%	9.0%	10.2%	11.0%	6.7%	0.3%	TOTAL

Rezultatele la matematică																											
Județ	Candidați înscriși	Candidați evaluați Matematică	Cu note 1-4,99	Cu note 5-5,49	Cu note 5,5-5,99	Cu note 6-6,49	Cu note 6,5-6,99	Cu note 7-7,49	Cu note 7,5-7,99	Cu note 8-8,49	Cu note 8,5-8,99	Cu note 9-9,49	Cu note 9,5-9,99	Cu nota 10	% 1-4,99	% 5-5,49	% 5,5-5,99	% 6-6,49	% 6,5-6,99	% 7-7,49	% 7,5-7,99	% 8-8,49	% 8,5-8,99	% 9-9,49	% 9,5-9,99	% 10	Județ
AB	2,580	2,479	771	161	142	186	188	206	167	196	179	158	111	14	31.1%	6.5%	5.7%	7.5%	7.6%	8.3%	6.7%	7.9%	7.2%	6.4%	4.5%	0.6%	AB
AG	4,939	4,737	1,308	276	287	355	380	378	345	369	364	374	260	41	27.6%	5.8%	6.1%	7.5%	8.0%	8.0%	7.3%	7.8%	7.7%	7.9%	5.5%	0.9%	AG
AR	3,363	3,135	1,182	292	253	257	247	242	185	177	133	104	50	13	37.7%	9.3%	8.1%	8.2%	7.9%	7.7%	5.9%	5.6%	4.2%	3.3%	1.6%	0.4%	AR
B	16,760	16,567	2,552	806	977	1,114	1,337	1,402	1,382	1,526	1,635	1,790	1,682	364	15.4%	4.9%	5.9%	6.7%	8.1%	8.5%	8.3%	9.2%	9.9%	10.8%	10.2%	2.2%	B
BC	4,995	4,675	1,474	350	388	364	394	335	307	303	272	281	182	25	31.5%	7.5%	8.3%	7.8%	8.4%	7.2%	6.6%	6.5%	5.8%	6.0%	3.9%	0.5%	BC
BH	4,824	4,394	1,601	307	339	321	307	323	303	260	264	200	144	25	36.4%	7.0%	7.7%	7.3%	7.0%	7.4%	6.9%	5.9%	6.0%	4.6%	3.3%	0.6%	BH
BN	2,617	2,516	756	217	231	218	223	231	174	158	140	109	54	5	30.0%	8.6%	9.2%	8.7%	8.9%	9.2%	6.9%	6.3%	5.6%	4.3%	2.1%	0.2%	BN
BR	2,089	1,872	486	136	126	144	171	160	168	132	134	120	79	16	26.0%	7.3%	6.7%	7.7%	9.1%	8.5%	9.0%	7.1%	7.2%	6.4%	4.2%	0.9%	BR
BT	3,650	3,466	1,402	295	272	288	245	226	185	181	157	126	77	12	40.5%	8.5%	7.8%	8.3%	7.1%	6.5%	5.3%	5.2%	4.5%	3.6%	2.2%	0.3%	BT
BV	4,617	4,501	1,307	286	290	325	329	348	340	362	325	290	258	41	29.0%	6.4%	6.4%	7.2%	7.3%	7.7%	7.6%	8.0%	7.2%	6.4%	5.7%	0.9%	BV
BZ	3,365	3,134	1,154	232	235	223	231	212	204	192	158	160	112	21	36.8%	7.4%	7.5%	7.1%	7.4%	6.8%	6.5%	6.1%	5.0%	5.1%	3.6%	0.7%	BZ
CJ	5,276	5,117	965	322	355	363	407	441	437	431	460	491	368	77	18.9%	6.3%	6.9%	7.1%	8.0%	8.6%	8.5%	8.4%	9.0%	9.6%	7.2%	1.5%	CJ
CL	2,160	2,006	909	199	189	148	138	137	91	73	51	42	24	5	45.3%	9.9%	9.4%	7.4%	6.9%	6.8%	4.5%	3.6%	2.5%	2.1%	1.2%	0.2%	CL
CS	1,690	1,586	672	157	118	99	126	112	86	76	53	59	26	2	42.4%	9.9%	7.4%	6.2%	7.9%	7.1%	5.4%	4.8%	3.3%	3.7%	1.6%	0.1%	CS
CT	6,103	6,009	1,832	408	415	481	437	463	428	438	425	353	284	45	30.5%	6.8%	6.9%	8.0%	7.3%	7.7%	7.1%	7.3%	7.1%	5.9%	4.7%	0.7%	CT
CV	1,651	1,534	564	151	144	135	151	115	89	80	55	38	10	2	36.8%	9.8%	9.4%	8.8%	9.8%	7.5%	5.8%	5.2%	3.6%	2.5%	0.7%	0.1%	CV
DB	3,876	3,616	1,301	283	311	280	307	266	240	229	168	144	73	14	36.0%	7.8%	8.6%	7.7%	8.5%	7.4%	6.6%	6.3%	4.6%	4.0%	2.0%	0.4%	DB
DJ	4,386	4,094	1,311	239	267	287	283	293	250	292	293	315	226	38	32.0%	5.8%	6.5%	7.0%	6.9%	7.2%	6.1%	7.1%	7.2%	7.7%	5.5%	0.9%	DJ
GJ	2,650	2,591	678	187	215	220	249	277	198	174	170	142	71	10	26.2%	7.2%	8.3%	8.5%	9.6%	10.7%	7.6%	6.7%	6.6%	5.5%	2.7%	0.4%	GJ
GL	4,044	3,856	1,012	252	280	275	300	333	328	299	292	298	165	22	26.2%	6.5%	7.3%	7.1%	7.8%	8.6%	8.5%	7.8%	7.6%	7.7%	4.3%	0.6%	GL
GR	1,860	1,744	514	136	144	165	158	248	126	89	90	51	18	5	29.5%	7.8%	8.3%	9.5%	9.1%	14.2%	7.2%	5.1%	5.2%	2.9%	1.0%	0.3%	GR
HD	2,736	2,602	873	203	220	213	207	231	174	168	150	107	49	7	33.6%	7.8%	8.5%	8.2%	8.0%	8.9%	6.7%	6.5%	5.8%	4.1%	1.9%	0.3%	HD
HR	2,646	2,588	894	250	228	196	237	200	187	157	139	79	20	1	34.5%	9.7%	8.8%	7.6%	9.2%	7.7%	7.2%	6.1%	5.4%	3.1%	0.8%	0.0%	HR
IF	3,631	3,563	1,187	295	267	303	288	316	225	213	182	165	103	19	33.3%	8.3%	7.5%	8.5%	8.1%	8.9%	6.3%	6.0%	5.1%	4.6%	2.9%	0.5%	IF
IL	1,942	1,846	773	144	115	159	123	93	116	115	86	76	44	2	41.9%	7.8%	6.2%	8.6%	6.7%	5.0%	6.3%	6.2%	4.7%	4.1%	2.4%	0.1%	IL
IS	7,038	6,749	2,091	471	456	525	471	494	424	468	416	472	375	86	31.0%	7.0%	6.8%	7.8%	7.0%	7.3%	6.3%	6.9%	6.2%	7.0%	5.6%	1.3%	IS
MH	1,765	1,608	710	132	117	119	101	98	63	79	67	72	44	6	44.2%	8.2%	7.3%	7.4%	6.3%	6.1%	3.9%	4.9%	4.2%	4.5%	2.7%	0.4%	MH
MM	3,642	3,461	1,143	307	278	285	267	251	242	219	226	136	93	14	33.0%	8.9%	8.0%	8.2%	7.7%	7.3%	7.0%	6.3%	6.5%	3.9%	2.7%	0.4%	MM
MS	4,216	3,991	1,563	311	324	314	317	263	228	237	185	162	78	9	39.2%	7.8%	8.1%	7.9%	7.9%	6.6%	5.7%	5.9%	4.6%	4.1%	2.0%	0.2%	MS
NT	3,972	3,927	1,387	312	325	277	254	246	269	236	255	232	125	9	35.3%	7.9%	8.3%	7.1%	6.5%	6.3%	6.9%	6.0%	6.5%	5.9%	3.2%	0.2%	NT
OT	2,908	2,593	979	202	195	185	175	181	159	155	147	131	69	15	37.8%	7.8%	7.5%	7.1%	6.7%	7.0%	6.1%	6.0%	5.7%	5.1%	2.7%	0.6%	OT
PH	5,880	5,709	1,576	421	410	450	421	487	462	410	418	384	235	35	27.6%	7.4%	7.2%	7.9%	7.4%	8.5%	8.1%	7.2%	7.3%	6.7%	4.1%	0.6%	PH
SB	3,340	3,142	952	199	224	240	222	248	241	249	228	190	128	21	30.3%	6.3%	7.1%	7.6%	7.1%	7.9%	7.7%	7.9%	7.3%	6.0%	4.1%	0.7%	SB
SJ	1,923	1,751	652	129	113	130	143	139	122	102	101	67	53	0	37.2%	7.4%	6.5%	7.4%	8.2%	7.9%	7.0%	5.8%	5.8%	3.8%	3.0%	0.0%	SJ
SM	2,740	2,454	957	192	207	199	177	160	149	152	114	84	48	15	39.0%	7.8%	8.4%	8.1%	7.2%	6.5%	6.1%	6.2%	4.6%	3.4%	2.0%	0.6%	SM
SV	6,514	6,176	1,753	483	527	549	541	615	489	380	370	264	183	22	28.4%	7.8%	8.5%	8.9%	8.8%	10.0%	7.9%	6.2%	6.0%	4.3%	3.0%	0.4%	SV
TL	1,550	1,519	645	117	127	123	119	100	74	84	56	45	27	2	42.5%	7.7%	8.4%	8.1%	7.8%	6.6%	4.9%	5.5%	3.7%	3.0%	1.8%	0.1%	TL
TM	5,503	5,264	1,709	383	348	366	363	387	345	360	337	361	266	39	32.5%	7.3%	6.6%	7.0%	6.9%	7.4%	6.6%	6.8%	6.4%	6.9%	5.1%	0.7%	TM
TR	2,234	2,004	815	191	158	149	171	132	116	83	69	75	40	5	40.7%	9.5%	7.9%	7.4%	8.5%	6.6%	5.8%	4.1%	3.4%	3.7%	2.0%	0.2%	TR
VL	2,543	2,449	758	177	182	203	201	194	173	147	159	150	95	10	31.0%	7.2%	7.4%	8.3%	8.2%	7.9%	7.1%	6.0%	6.5%	6.1%	3.9%	0.4%	VL
VN	2,730	2,621	1,031	197	152	168	162	182	142	147	160	163	105	12	39.3%	7.5%	5.8%	6.4%	6.2%	6.9%	5.4%	5.6%	6.1%	6.2%	4.0%	0.5%	VN
VS	3,519	3,367	1,600	304	257	233	203	183	186	152	104	89	49	7	47.5%	9.0%	7.6%	6.9%	6.0%	5.4%	5.5%	4.5%	3.1%	2.6%	1.5%	0.2%	VS
TOTAL	160,467	153,013	47,799	11,112	11,208	11,634	11,771	11,948	10,619	10,350	9,787	9,149	6,503	1,133	31.2%	7.3%	7.3%	7.6%	7.7%	7.8%	6.9%	6.8%	6.4%	6.0%	4.2%	0.7%	TOTAL

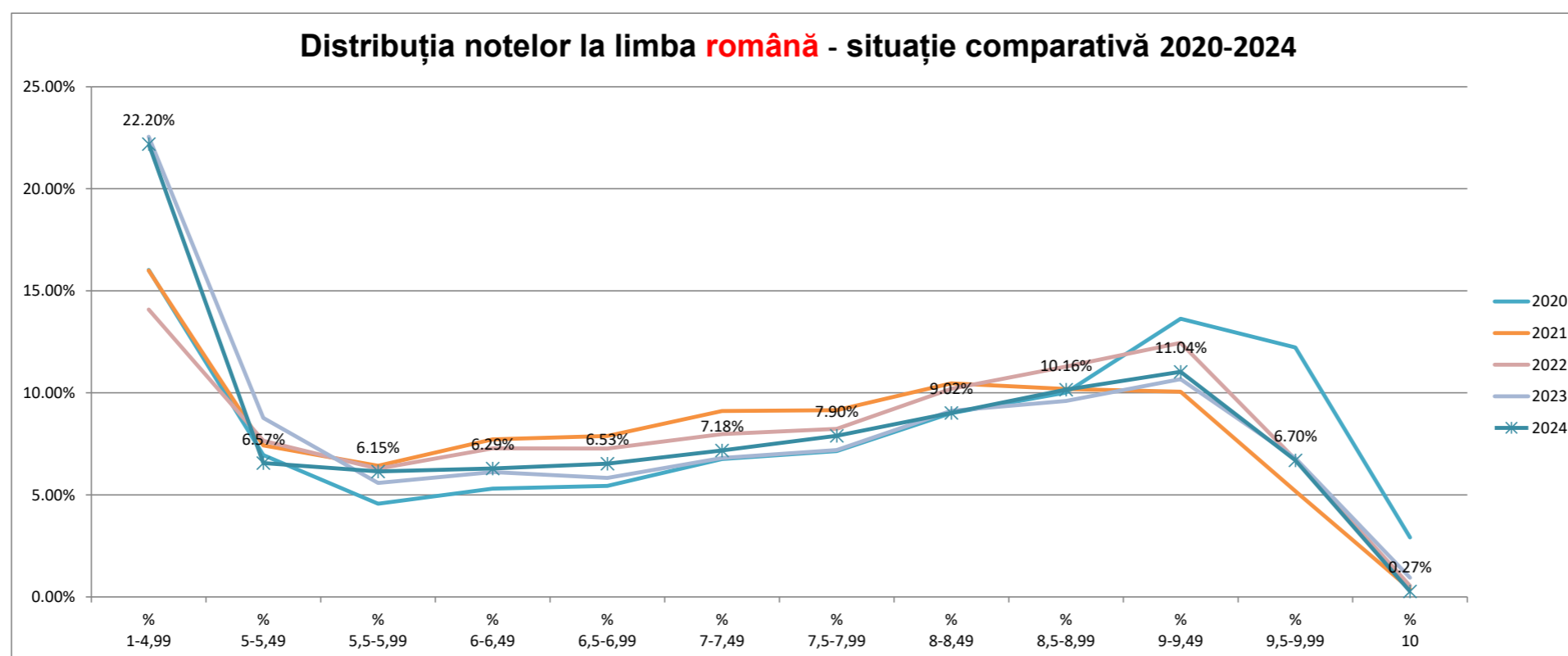
Rezultatele la limba maternă																											
Județ	Candidați înscrși	Candidați evaluați Maternă	Cu note 1-4,99	Cu note 5-5,49	Cu note 5,5-5,99	Cu note 6-6,49	Cu note 6,5-6,99	Cu note 7-7,49	Cu note 7,5-7,99	Cu note 8-8,49	Cu note 8,5-8,99	Cu note 9-9,49	Cu note 9,5-9,99	Cu nota 10	% 1-4,99	% 5-5,49	% 5,5-5,99	% 6-6,49	% 6,5-6,99	% 7-7,49	% 7,5-7,99	% 8-8,49	% 8,5-8,99	% 9-9,49	% 9,5-9,99	% 10	Județ
AB	63	62	5	5	5	3	4	3	5	10	9	9	4	0	8.1%	8.1%	8.1%	4.8%	6.5%	4.8%	8.1%	16.1%	14.5%	14.5%	6.5%	0.0%	AB
AG	0	0	0	0	0	0	0	0	0	0	0	0	0	0													AG
AR	200	193	26	6	9	14	18	15	16	26	25	19	19	0	13.5%	3.1%	4.7%	7.3%	9.3%	7.8%	8.3%	13.5%	13.0%	9.8%	9.8%	0.0%	AR
B	222	222	7	2	6	5	6	16	18	25	33	46	52	6	3.2%	0.9%	2.7%	2.3%	2.7%	7.2%	8.1%	11.3%	14.9%	20.7%	23.4%	2.7%	B
BC	20	15	4	0	0	1	1	4	1	2	2	0	0	0	26.7%	0.0%	0.0%	6.7%	6.7%	26.7%	6.7%	13.3%	13.3%	0.0%	0.0%	0.0%	BC
BH	946	828	132	35	42	55	60	79	82	100	95	94	52	2	15.9%	4.2%	5.1%	6.6%	7.2%	9.5%	9.9%	12.1%	11.5%	11.4%	6.3%	0.2%	BH
BN	76	75	1	2	9	6	8	4	9	13	11	8	4	0	1.3%	2.7%	12.0%	8.0%	10.7%	5.3%	12.0%	17.3%	14.7%	10.7%	5.3%	0.0%	BN
BR	0	0	0	0	0	0	0	0	0	0	0	0	0	0													BR
BT	0	0	0	0	0	0	0	0	0	0	0	0	0	0													BT
BV	420	414	40	19	17	13	22	42	45	58	62	64	32	0	9.7%	4.6%	4.1%	3.1%	5.3%	10.1%	10.9%	14.0%	15.0%	15.5%	7.7%	0.0%	BV
BZ	0	0	0	0	0	0	0	0	0	0	0	0	0	0													BZ
CJ	628	620	23	8	14	19	27	32	51	81	84	140	128	13	3.7%	1.3%	2.3%	3.1%	4.4%	5.2%	8.2%	13.1%	13.5%	22.6%	20.6%	2.1%	CJ
CL	0	0	0	0	0	0	0	0	0	0	0	0	0	0													CL
CS	16	16	4	1	0	2	0	1	0	3	3	1	1	0	25.0%	6.3%	0.0%	12.5%	0.0%	6.3%	0.0%	18.8%	18.8%	6.3%	6.3%	0.0%	CS
CT	0	0	0	0	0	0	0	0	0	0	0	0	0	0													CT
CV	1,173	1,116	99	44	48	50	58	91	105	152	179	170	112	8	8.9%	3.9%	4.3%	4.5%	5.2%	8.2%	9.4%	13.6%	16.0%	15.2%	10.0%	0.7%	CV
DB	0	0	0	0	0	0	0	0	0	0	0	0	0	0													DB
DJ	0	0	0	0	0	0	0	0	0	0	0	0	0	0													DJ
GJ	0	0	0	0	0	0	0	0	0	0	0	0	0	0													GJ
GL	0	0	0	0	0	0	0	0	0	0	0	0	0	0													GL
GR	0	0	0	0	0	0	0	0	0	0	0	0	0	0													GR
HD	74	74	17	5	0	2	8	4	7	7	10	10	4	0	23.0%	6.8%	0.0%	2.7%	10.8%	5.4%	9.5%	9.5%	13.5%	13.5%	5.4%	0.0%	HD
HR	2,258	2,207	184	75	97	104	145	170	221	278	287	371	258	17	8.3%	3.4%	4.4%	4.7%	6.6%	7.7%	10.0%	12.6%	13.0%	16.8%	11.7%	0.8%	HR
IF	13	13	0	0	0	0	0	0	4	3	4	0	2	0	0.0%	0.0%	0.0%	0.0%	0.0%	0.0%	30.8%	23.1%	30.8%	0.0%	15.4%	0.0%	IF
IL	0	0	0	0	0	0	0	0	0	0	0	0	0	0													IL
IS	0	0	0	0	0	0	0	0	0	0	0	0	0	0													IS
MH	0	0	0	0	0	0	0	0	0	0	0	0	0	0													MH
MM	129	126	18	3	1	3	11	8	9	22	18	25	8	0	14.3%	2.4%	0.8%	2.4%	8.7%	6.3%	7.1%	17.5%	14.3%	19.8%	6.3%	0.0%	MM
MS	1,450	1,360	139	56	51	61	76	126	125	163	181	227	144	11	10.2%	4.1%	3.8%	4.5%	5.6%	9.3%	9.2%	12.0%	13.3%	16.7%	10.6%	0.8%	MS
NT	0	0	0	0	0	0	0	0	0	0	0	0	0	0													NT
OT	0	0	0	0	0	0	0	0	0	0	0	0	0	0													OT
PH	0	0	0	0	0	0	0	0	0	0	0	0	0	0													PH
SB	392	389	13	13	13	11	14	18	27	42	59	102	75	2	3.3%	3.3%	3.3%	2.8%	3.6%	4.6%	6.9%	10.8%	15.2%	26.2%	19.3%	0.5%	SB
SJ	401	383	38	19	12	17	19	27	37	53	77	52	32	0	9.9%	5.0%	3.1%	4.4%	5.0%	7.0%	9.7%	13.8%	20.1%	13.6%	8.4%	0.0%	SJ
SM	869	765	98	37	24	39	54	53	78	104	110	97	65	6	12.8%	4.8%	3.1%	5.1%	7.1%	6.9%	10.2%	13.6%	14.4%	12.7%	8.5%	0.8%	SM
SV	0	0	0	0	0	0	0	0	0	0	0	0	0	0													SV
TL	0	0	0	0	0	0	0	0	0	0	0	0	0	0													TL
TM	317	315	24	6	11	11	15	21	38	43	43	66	34	3	7.6%	1.9%	3.5%	3.5%	4.8%	6.7%	12.1%	13.7%	13.7%	21.0%	10.8%	1.0%	TM
TR	0	0	0	0	0	0	0	0	0	0	0	0	0	0													TR
VL	0	0	0	0	0	0	0	0	0	0	0	0	0	0													VL
VN	0	0	0	0	0	0	0	0	0	0	0	0	0	0													VN
VS	0	0	0	0	0	0	0	0	0	0	0	0	0	0													VS
TOTAL	9,667	9,193	872	336	359	416	546	714	878	1,185	1,292	1,501	1,026	68	9.5%	3.7%	3.9%	4.5%	5.9%	7.8%	9.6%	12.9%	14.1%	16.3%	11.2%	0.7%	TOTAL

Distribuția notelor la limba română pe mediu și sex												
Mediu	% 1-4,99	% 5-5,49	% 5,5-5,99	% 6-6,49	% 6,5-6,99	% 7-7,49	% 7,5-7,99	% 8-8,49	% 8,5-8,99	% 9-9,49	% 9,5-9,99	% 10
Urban	13.33%	5.18%	5.26%	5.85%	6.42%	7.42%	8.66%	10.44%	12.58%	14.82%	9.64%	0.41%
Rural	36.77%	8.85%	7.62%	7.01%	6.72%	6.79%	6.66%	6.69%	6.18%	4.82%	1.86%	0.05%
Sex	% 1-4,99	% 5-5,49	% 5,5-5,99	% 6-6,49	% 6,5-6,99	% 7-7,49	% 7,5-7,99	% 8-8,49	% 8,5-8,99	% 9-9,49	% 9,5-9,99	% 10
Fete	16.29%	5.77%	5.59%	5.88%	6.35%	7.30%	8.15%	9.97%	11.60%	13.58%	9.08%	0.43%
Băieți	28.13%	7.37%	6.71%	6.71%	6.72%	7.05%	7.65%	8.07%	8.70%	8.48%	4.30%	0.11%

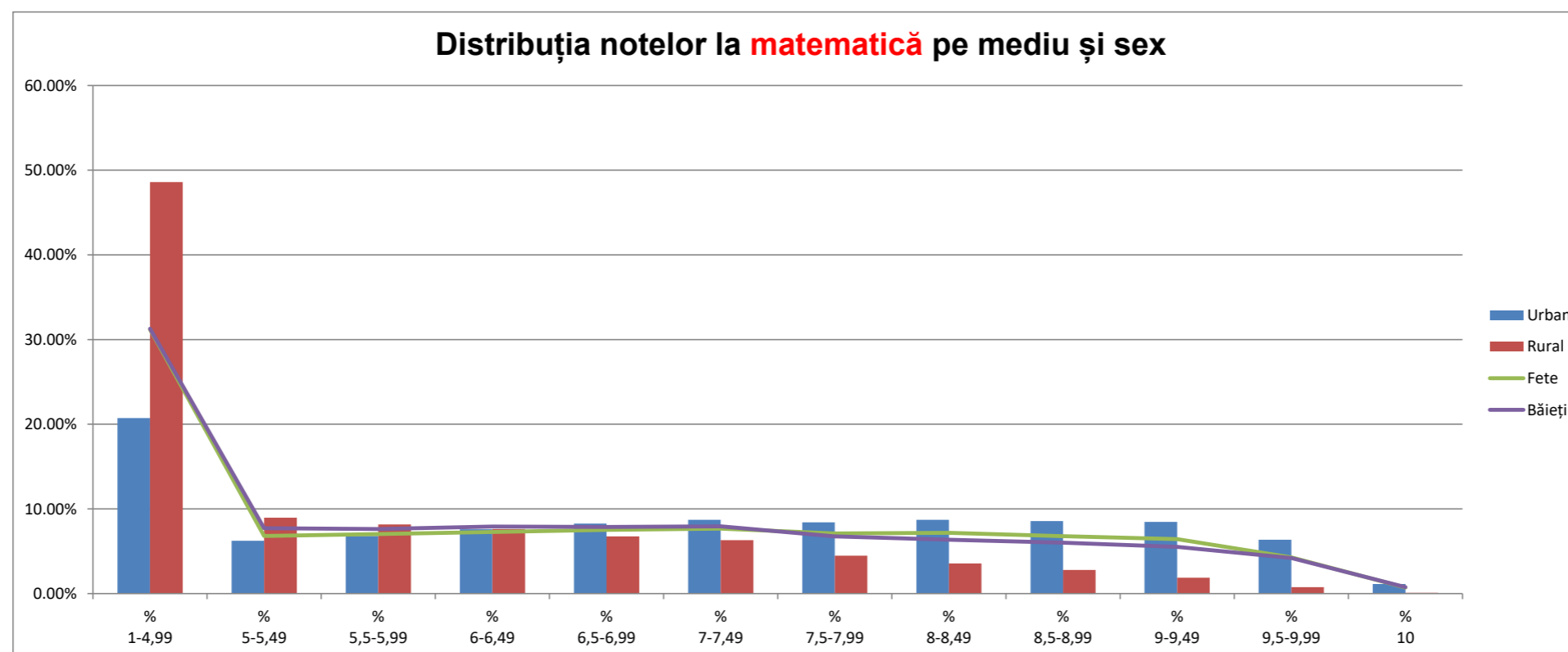


Distribuția notelor la limba română - situație comparativă 2011-2024

An	% 1-4,99	% 5-5,49	% 5,5-5,99	% 6-6,49	% 6,5-6,99	% 7-7,49	% 7,5-7,99	% 8-8,49	% 8,5-8,99	% 9-9,49	% 9,5-9,99	% 10	Cu note 1-4,99	Cu note 5-5,49	Cu note 5,5-5,99	Cu note 6-6,49	Cu note 6,5-6,99	Cu note 7-7,49	Cu note 7,5-7,99	Cu note 8-8,49	Cu note 8,5-8,99	Cu note 9-9,49	Cu note 9,5-9,99	Cu nota 10
2011	12.47%	8.62%	6.62%	8.01%	8.48%	9.57%	9.87%	10.75%	9.79%	9.29%	5.67%	0.88%	26,636	18,409	14,143	17,103	18,105	20,451	21,083	22,959	20,903	19,840	12,115	1,873
2012	19.43%	6.22%	6.64%	7.03%	7.66%	9.12%	9.48%	10.05%	9.38%	8.63%	5.65%	0.73%	32,464	10,391	11,091	11,745	12,793	15,243	15,834	16,791	15,679	14,416	9,439	1,214
2013	17.44%	9.00%	6.26%	7.31%	7.41%	8.36%	8.15%	9.45%	9.15%	9.93%	6.58%	0.95%	28,306	14,615	10,160	11,874	12,032	13,569	13,232	15,336	14,855	16,123	10,679	1,550
2014	26.59%	11.51%	6.96%	7.81%	7.16%	7.93%	7.24%	7.71%	6.61%	6.53%	3.57%	0.37%	42,542	18,420	11,143	12,496	11,459	12,690	11,589	12,339	10,582	10,447	5,705	599
2015	14.51%	7.98%	5.85%	7.06%	7.50%	9.02%	9.14%	10.78%	10.27%	10.80%	6.38%	0.72%	23,069	12,682	9,299	11,233	11,931	14,339	14,530	17,149	16,326	17,174	10,147	1,137
2016	17.92%	7.82%	5.78%	6.79%	7.16%	8.30%	8.30%	9.78%	9.75%	10.58%	7.00%	0.81%	26,725	11,667	8,620	10,128	10,683	12,375	12,382	14,584	14,534	15,777	10,440	1,213
2017	14.03%	6.42%	4.76%	5.72%	6.35%	8.08%	8.93%	10.69%	11.06%	13.01%	9.71%	1.24%	19,790	9,062	6,721	8,072	8,955	11,402	12,603	15,087	15,609	18,360	13,699	1,745
2018	16.82%	7.25%	5.20%	6.21%	6.53%	7.83%	7.95%	9.61%	9.70%	12.01%	9.38%	1.52%	24,095	10,387	7,452	8,894	9,349	11,218	11,383	13,767	13,891	17,208	13,442	2,172
2019	19.29%	7.54%	5.13%	5.86%	6.09%	7.40%	7.47%	9.14%	9.58%	11.93%	9.20%	1.37%	28,272	11,043	7,522	8,586	8,924	10,851	10,941	13,397	14,037	17,477	13,487	2,011
2020	16.03%	6.96%	4.57%	5.31%	5.44%	6.76%	7.15%	9.01%	10.01%	13.63%	12.22%	2.92%	25,832	11,213	7,365	8,563	8,766	10,895	11,527	14,520	16,140	21,977	19,699	4,700
2021	16.00%	7.42%	6.43%	7.72%	7.89%	9.11%	9.15%	10.46%	10.19%	10.06%	5.18%	0.39%	19,771	9,173	7,945	9,546	9,747	11,264	11,314	12,932	12,599	12,431	6,403	482
2022	14.08%	7.66%	6.29%	7.28%	7.27%	7.98%	8.23%	10.20%	11.29%	12.45%	6.73%	0.54%	20,970	11,398	9,358	10,845	10,829	11,878	12,259	15,181	16,803	18,536	10,023	810
2023	22.55%	8.77%	5.58%	6.12%	5.83%	6.81%	7.20%	9.12%	9.60%	10.67%	6.80%	0.94%	34,864	13,554	8,634	9,455	9,013	10,531	11,131	14,105	14,848	16,492	10,515	1,454
2024	22.20%	6.57%	6.15%	6.29%	6.53%	7.18%	7.90%	9.02%	10.16%	11.04%	6.70%	0.27%	34,047	10,071	9,434	9,652	10,024	11,011	12,121	13,838	15,578	16,928	10,277	416

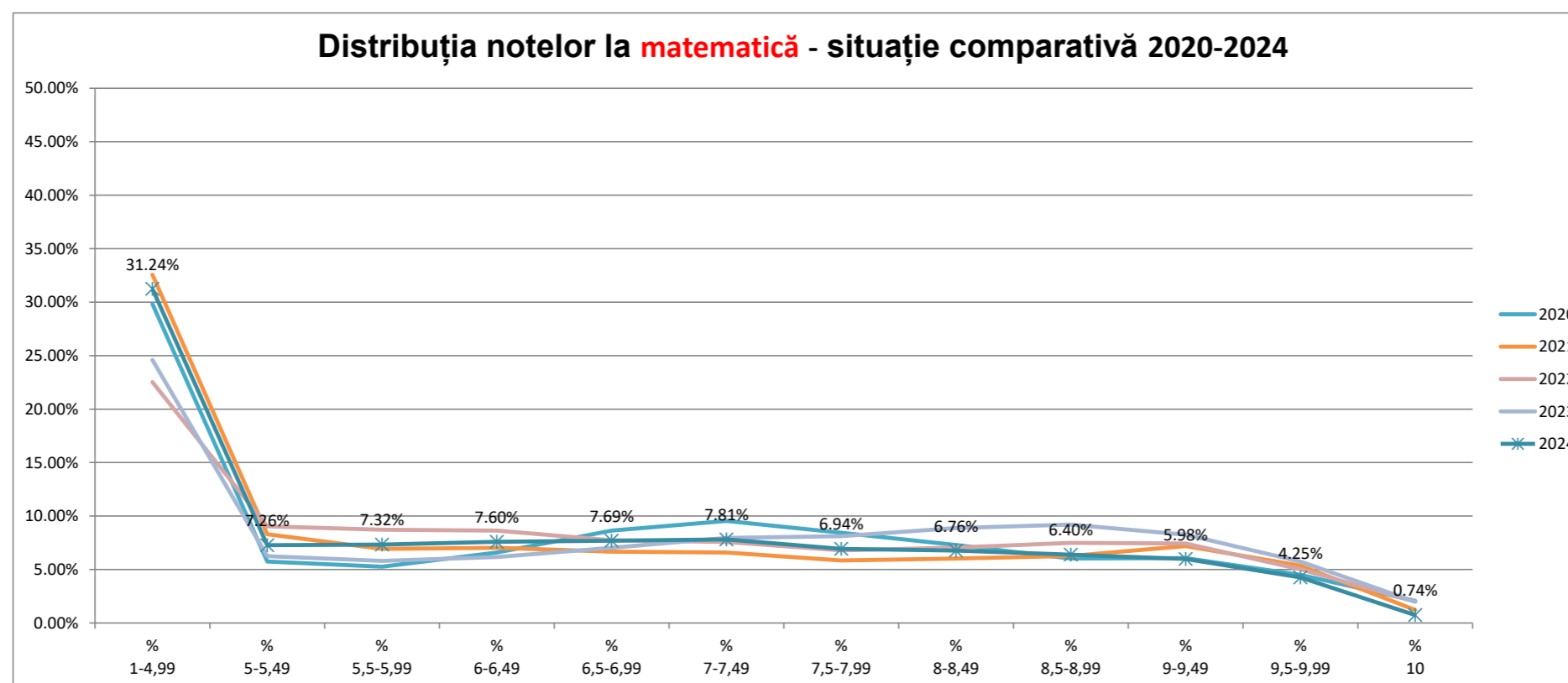


Distribuția notelor la matematică pe mediu și sex												
Mediu	% 1-4,99	% 5-5,49	% 5,5-5,99	% 6-6,49	% 6,5-6,99	% 7-7,49	% 7,5-7,99	% 8-8,49	% 8,5-8,99	% 9-9,49	% 9,5-9,99	% 10
Urban	20.72%	6.23%	6.81%	7.60%	8.26%	8.71%	8.43%	8.71%	8.58%	8.47%	6.36%	1.14%
Rural	48.60%	8.96%	8.18%	7.61%	6.76%	6.32%	4.49%	3.55%	2.80%	1.87%	0.77%	0.09%
Sex	% 1-4,99	% 5-5,49	% 5,5-5,99	% 6-6,49	% 6,5-6,99	% 7-7,49	% 7,5-7,99	% 8-8,49	% 8,5-8,99	% 9-9,49	% 9,5-9,99	% 10
Fete	31.20%	6.81%	7.02%	7.28%	7.52%	7.67%	7.11%	7.17%	6.78%	6.43%	4.28%	0.72%
Băieți	31.28%	7.72%	7.63%	7.93%	7.86%	7.95%	6.77%	6.35%	6.01%	5.53%	4.22%	0.77%

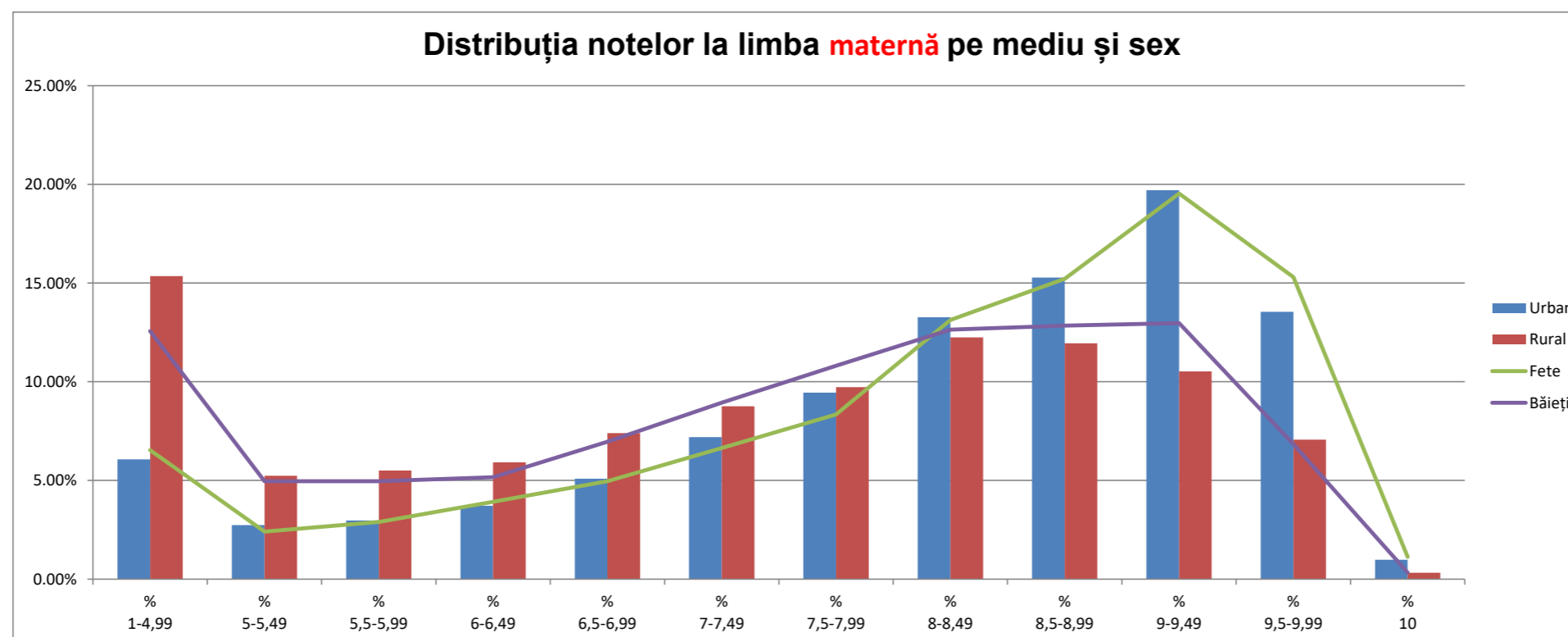


Distribuția notelor la matematică - situație comparativă 2011-2024

An	% 1-4,99	% 5-5,49	% 5,5-5,99	% 6-6,49	% 6,5-6,99	% 7-7,49	% 7,5-7,99	% 8-8,49	% 8,5-8,99	% 9-9,49	% 9,5-9,99	% 10	Cu note 1-4,99	Cu note 5-5,49	Cu note 5,5-5,99	Cu note 6-6,49	Cu note 6,5-6,99	Cu note 7-7,49	Cu note 7,5-7,99	Cu note 8-8,49	Cu note 8,5-8,99	Cu note 9-9,49	Cu note 9,5-9,99	Cu nota 10
2011	27.57%	14.50%	9.78%	8.96%	7.45%	6.54%	5.55%	5.11%	4.42%	4.44%	4.12%	1.57%	58,890	30,969	20,885	19,135	15,925	13,974	11,851	10,926	9,449	9,478	8,793	3,345
2012	50.15%	8.54%	5.38%	5.10%	4.47%	4.37%	3.89%	4.07%	3.91%	4.04%	3.55%	2.54%	83,800	14,262	8,990	8,522	7,473	7,308	6,504	6,794	6,529	6,744	5,929	4,245
2013	28.36%	8.17%	5.62%	5.28%	4.78%	4.98%	4.95%	5.76%	6.93%	8.26%	10.08%	6.83%	46,034	13,258	9,122	8,565	7,757	8,077	8,037	9,358	11,257	13,408	16,366	11,092
2014	27.05%	8.80%	6.69%	6.81%	6.56%	7.03%	7.31%	8.30%	6.77%	6.28%	5.68%	2.72%	43,287	14,081	10,704	10,898	10,495	11,248	11,704	13,276	10,833	10,042	9,083	4,360
2015	26.45%	9.32%	7.06%	6.54%	5.79%	5.74%	5.71%	6.50%	6.97%	7.58%	8.65%	3.70%	41,937	14,777	11,197	10,373	9,176	9,101	9,050	10,312	11,050	12,020	13,712	5,873
2016	32.69%	8.42%	6.74%	6.77%	6.38%	6.90%	7.46%	7.91%	6.50%	4.91%	3.62%	1.72%	48,597	12,509	10,016	10,057	9,482	10,258	11,084	11,752	9,656	7,293	5,387	2,556
2017	33.99%	7.24%	5.76%	5.69%	5.61%	5.86%	6.02%	6.45%	6.50%	7.21%	6.49%	3.16%	47,839	10,188	8,109	8,008	7,900	8,253	8,470	9,083	9,146	10,144	9,135	4,450
2018	38.57%	11.10%	9.15%	7.86%	6.27%	5.57%	4.72%	4.48%	3.86%	3.77%	3.28%	1.37%	55,108	15,865	13,067	11,228	8,961	7,960	6,737	6,403	5,519	5,382	4,692	1,953
2019	37.22%	10.34%	7.93%	7.67%	7.12%	6.21%	5.26%	4.89%	4.31%	4.05%	3.22%	1.78%	54,406	15,109	11,586	11,216	10,410	9,083	7,693	7,148	6,306	5,921	4,703	2,600
2020	29.83%	5.74%	5.27%	6.59%	8.65%	9.54%	8.43%	7.29%	6.02%	6.06%	4.49%	2.07%	47,950	9,230	8,474	10,601	13,900	15,332	13,552	11,726	9,683	9,743	7,220	3,335
2021	32.57%	8.30%	6.94%	7.03%	6.67%	6.58%	5.84%	6.03%	6.27%	7.19%	5.36%	1.22%	40,153	10,237	8,552	8,671	8,228	8,118	7,204	7,431	7,729	8,864	6,606	1,505
2022	22.53%	9.04%	8.71%	8.64%	7.73%	7.57%	6.79%	7.05%	7.49%	7.44%	5.01%	2.00%	33,473	13,440	12,948	12,842	11,490	11,243	10,088	10,470	11,137	11,051	7,451	2,966
2023	24.60%	6.25%	5.80%	6.17%	7.04%	7.95%	8.13%	8.88%	9.20%	8.26%	5.74%	1.99%	37,939	9,638	8,939	9,522	10,859	12,261	12,533	13,704	14,185	12,735	8,859	3,066
2024	31.24%	7.26%	7.32%	7.60%	7.69%	7.81%	6.94%	6.76%	6.40%	5.98%	4.25%	0.74%	47,799	11,112	11,208	11,634	11,771	11,948	10,619	10,350	9,787	9,149	6,503	1,133



Distribuția notelor la limba maternă pe mediu și sex												
Mediu	% 1-4,99	% 5-5,49	% 5,5-5,99	% 6-6,49	% 6,5-6,99	% 7-7,49	% 7,5-7,99	% 8-8,49	% 8,5-8,99	% 9-9,49	% 9,5-9,99	% 10
Urban	6.07%	2.74%	2.98%	3.72%	5.09%	7.19%	9.45%	13.27%	15.28%	19.70%	13.54%	0.98%
Rural	15.35%	5.24%	5.50%	5.92%	7.39%	8.75%	9.73%	12.24%	11.95%	10.53%	7.07%	0.33%
Sex	% 1-4,99	% 5-5,49	% 5,5-5,99	% 6-6,49	% 6,5-6,99	% 7-7,49	% 7,5-7,99	% 8-8,49	% 8,5-8,99	% 9-9,49	% 9,5-9,99	% 10
Fete	6.53%	2.40%	2.89%	3.92%	4.96%	6.64%	8.34%	13.13%	15.22%	19.54%	15.30%	1.13%
Băieți	12.57%	4.96%	4.96%	5.16%	6.96%	8.95%	10.81%	12.64%	12.84%	12.97%	6.83%	0.33%



Rezultate contestații																					
JUDEȚ	TOTAL Lucrări	din care			TOTAL contestații	% contestații	din care			Contestații cu notă	din care			Au mărit nota	din care			Au micșorat nota	din care		
		Română	Maternă	Matematică			Română	Maternă	Matematică		Română	Maternă	Matematică		Română	Maternă	Matematică		Română	Maternă	Matematică
AB	5,026	2,485	62	2,479	416	8.28%	210	2	204	416	210	2	204	220	126	1	93	140	70	1	69
AG	9,483	4,746	0	4,737	953	10.05%	522	0	431	953	522	0	431	534	320	0	214	309	172	0	137
AR	6,468	3,140	193	3,135	479	7.41%	264	5	210	479	264	5	210	261	161	4	96	163	91	0	72
B	33,363	16,574	222	16,567	5,429	16.27%	2,751	52	2,626	5,429	2,751	52	2,626	2,856	1,565	33	1,258	1,989	1,028	16	945
BC	9,374	4,684	15	4,675	709	7.56%	370	0	339	709	370	0	339	345	193	0	152	277	158	0	119
BH	9,630	4,408	828	4,394	779	8.09%	416	19	344	779	416	19	344	415	245	8	162	252	138	8	106
BN	5,109	2,518	75	2,516	308	6.03%	165	5	138	308	165	5	138	165	97	3	65	104	58	2	44
BR	3,748	1,876	0	1,872	286	7.63%	135	0	151	286	135	0	151	159	89	0	70	88	36	0	52
BT	6,938	3,472	0	3,466	457	6.59%	241	0	216	457	241	0	216	245	146	0	99	149	85	0	64
BV	9,429	4,514	414	4,501	958	10.16%	483	39	436	958	483	39	436	468	256	18	194	399	203	21	175
BZ	6,285	3,151	0	3,134	425	6.76%	232	0	193	425	232	0	193	242	137	0	105	132	78	0	54
CJ	10,856	5,119	620	5,117	1,179	10.86%	608	33	538	1,179	608	33	538	665	373	20	272	380	195	11	174
CL	4,021	2,015	0	2,006	201	5.00%	113	0	88	201	113	0	88	101	75	0	26	75	33	0	42
CS	3,194	1,592	16	1,586	160	5.01%	94	1	65	160	94	1	65	81	54	0	27	63	39	1	23
CT	12,026	6,017	0	6,009	1,196	9.95%	641	0	555	1,196	641	0	555	672	393	0	279	395	219	0	176
CV	4,192	1,542	1,116	1,534	101	2.41%	49	19	33	101	49	19	33	66	39	9	18	26	9	8	9
DB	7,242	3,626	0	3,616	478	6.60%	256	0	222	478	256	0	222	258	155	0	103	149	82	0	67
DJ	8,192	4,098	0	4,094	941	11.49%	523	0	418	941	523	0	418	501	307	0	194	334	186	0	148
GJ	5,191	2,600	0	2,591	411	7.92%	234	0	177	411	234	0	177	212	128	0	84	161	98	0	63
GL	7,726	3,870	0	3,856	683	8.84%	355	0	328	683	355	0	328	355	210	0	145	254	126	0	128
GR	3,493	1,749	0	1,744	260	7.44%	147	0	113	260	147	0	113	140	89	0	51	85	50	0	35
HD	5,282	2,606	74	2,602	416	7.88%	222	6	188	416	222	6	188	195	115	3	77	156	97	3	56
HR	7,383	2,588	2,207	2,588	315	4.27%	154	67	94	315	154	67	94	178	86	44	48	104	57	19	28
IF	7,147	3,571	13	3,563	752	10.52%	388	6	358	752	388	6	358	367	213	3	151	282	149	3	130
IL	3,706	1,860	0	1,846	245	6.61%	134	0	111	245	134	0	111	138	92	0	46	64	33	0	31
IS	13,516	6,767	0	6,749	1,460	10.80%	773	0	687	1,460	773	0	687	779	457	0	322	515	282	0	233
MH	3,223	1,615	0	1,608	207	6.42%	111	0	96	207	111	0	96	101	61	0	40	78	40	0	38
MM	7,066	3,479	126	3,461	565	8.00%	289	4	272	565	289	4	272	314	176	2	136	186	96	2	88
MS	9,359	4,008	1,360	3,991	533	5.70%	265	44	224	533	265	44	224	274	150	23	101	183	97	17	69
NT	7,855	3,928	0	3,927	462	5.88%	251	0	211	462	251	0	211	250	158	0	92	155	83	0	72
OT	5,191	2,598	0	2,593	370	7.13%	219	0	151	370	219	0	151	212	138	0	74	107	68	0	39
PH	11,418	5,709	0	5,709	909	7.96%	478	0	431	909	478	0	431	505	309	0	196	308	147	0	161
SB	6,694	3,163	389	3,142	727	10.86%	348	68	311	727	348	68	311	393	191	53	149	255	135	14	106
SJ	3,900	1,766	383	1,751	176	4.51%	99	7	70	176	99	7	70	81	49	1	31	76	45	6	25
SM	5,688	2,469	765	2,454	283	4.98%	149	14	120	283	149	14	120	143	91	6	46	100	53	7	40
SV	12,367	6,191	0	6,176	978	7.91%	524	0	454	978	524	0	454	527	296	0	231	340	200	0	140
TL	3,039	1,520	0	1,519	227	7.47%	122	0	105	227	122	0	105	118	74	0	44	77	41	0	36
TM	10,854	5,275	315	5,264	848	7.81%	433	34	381	848	433	34	381	470	260	21	189	278	144	11	123
TR	4,014	2,010	0	2,004	231	5.75%	137	0	94	231	137	0	94	114	70	0	44	92	60	0	32
VL	4,908	2,459	0	2,449	345	7.03%	169	0	176	345	169	0	176	173	93	0	80	119	65	0	54
VN	5,258	2,637	0	2,621	375	7.13%	193	0	182	375	193	0	182	213	126	0	87	113	54	0	59
VS	6,749	3,382	0	3,367	407	6.03%	218	0	189	407	218	0	189	214	132	0	82	134	77	0	57
	315,603	153,397	9,193	153,013	27,640	8.76%	14,485	425	12,730	27,640	14,485	425	12,730	14,720	8,495	252	5,973	9,646	5,177	150	4,319